

**A STUDENT INFORMATION SYSTEM REPORT : A CASE STUDY OF KISORO
MUNICIPAL VOCATIONAL INSTITUTE**

TIMOTHY IGIRANEZA

J22/BBUC/BSIT/002

**A DISSERTATION SUBMITTED TO THE FACULTY OF ENGINEERING, DESIGN, AND
TECHNOLOGY IN PARTIAL FULFILLMENT OF THE REQUIREMENTS FOR THE AWARD
OF A DEGREE OF BACHELOR OF SCIENCE IN INFORMATION TECHNOLOGY OF
UGANDA CHRISTIAN UNIVERSITY**

November, 2024



**UGANDA CHRISTIAN
UNIVERSITY**

A Centre of Excellence in the Heart of Africa

ABSTRACT

This report outlines the implementation of a Student Information System (SIS) at Kisoro Municipal Vocational Institute, aiming to modernize administrative processes and enhance communication channels. The SIS was designed to digitize student records, streamline administrative tasks, and improve data security. The implementation process involved needs assessment, vendor selection, customization, data migration, training, testing, and deployment. The SIS features are; Secure Login and Logout, Dashboard, Manage Department, Course Management, Student Information and Records Management, Manage User List (CRUD), Manage Account Details, and Manage System Information. Challenges such as resistance to change, technical issues, and data migration complexity were encountered during implementation. However, the SIS has had a significant impact, improving efficiency, transparency, data security, accessibility, and decision-making processes. Recommendations include continued training, continuous improvement, and integration with other systems. Overall, the SIS implementation has positively transformed institute operations and has been well received by stakeholders.

DECLARATION

I IGIRANEZA TIMOTHY hereby declare that this is my original work, is not plagiarized, and has not been submitted to any other institution for an award of Bachelors of science in Information Technology

Student's name,

.....

Signature.....

APPROVAL

I certify that this project report is the original work of IGIRANEZA TIMOTHY and has been conducted under my supervision in the partial fulfillment of the requirement for the award of Bachelors of Science in Information Technology at Uganda Christian University-Bishop Barham University college.

Supervisor's name

IGIRANEZA TIMOTHY

Signature.....

Date..... 07-11-2024

DEDICATION

I dedicate this report to my parents, Mr. Muhawe Yonah & Mrs. Flora Muhawe, Mr. Steven Nsaba, my fellow students and UCU-BBUC IT department staff, plus KISORO MUNICIPAL VOCATIONAL INSTITUTE staff. And all who supported and prayed for me.

ACKNOWLEDGEMENT

I want to take this opportunity to thank the Almighty God who enabled me to do my Research Project with His protection.

I wish to extend my sincere gratitude to the following people for their contribution, guidance, and assistance they gave me that made the study successful and possible.

A special thanks go to the staff of the UCU-BBUC who offered me the knowledge that I used during my research, the university supervisor Mr. Warren Mugabe, and the staff of KISORO MUNICIPAL VOCATIONAL INSTITUTE most especially the Administrators, and lecturers who used to teach me during class time.

May God bless them all.

Contents

ABSTRACT	1
DECLARATION.....	2
APPROVAL.....	3
DEDICATION.....	4
ACKNOWLEDGEMENT	5
The list of tables.....	8
The list of figures.....	9
CHAPTER ONE	10
INTRODUCTION	10
1.0 Introduction	10
1.1 Background to the Study.....	10
1.2 Problem Statement.	11
1.3 Objectives	11
1.4 Scope of the Study.....	11
1.5 Justification for Research	12
CHAPTER TWO:.....	13
LITERATURE REVIEW	13
2.0 Introduction	13
2.1 Related Studies	13
2.2 Research Gap.....	16
2.3 Strengths and Weaknesses of the Current System	16
2.4 System Requirements	17
2.5 Design for a Student Information System	20
CHAPTER THREE.....	22
RESEARCH METHODOLOGY	22
3.0 Introduction	22
3.1 Research Design.....	22
3.2 Population Study	22
3.3 Development Methodology	24
3.4 Requirements Identification	24
3.5 System Design	27
3.6 System Implementation	29
3.7 System Testing and Validation	30

CHAPTER FOUR.....	31
SYSTEM ANALYSIS AND DESIGN	31
4.0 Introduction	31
4.1 System Analysis	31
4.2 System Analysis and Study.....	32
4.3 Requirements Specification	32
4.4 Structured Requirements Analysis.....	34
SYSTEM IMPLEMENTATION RESULTS.....	35
5.1 Introduction	35
5.2 Implementation Steps.....	35
5.3 Hardware and Software Requirements	35
5.4 Environmental Requirements	36
5.5 System Testing and Validation	36
5.6 Results and Outcomes.....	36
5.7 Challenges Encountered	36
5.8 Lessons Learned.....	37
5.9 Future Enhancements	38
5.10 Conclusion	39
CHAPTER SIX.....	40
DISCUSSIONS, CONCLUSION, AND RECOMMENDATIONS.....	40
6.1 Discussions	40
6.2 Conclusion	42
6.3 Recommendations	42
References.....	44

The list of tables

Table 1 : The table above shows the Different strata and the number of people in each stratum.	23
Table 2 A table showing the Sample size for each stratum.	24
Table 3 : the comparisons of the system's strengths and weaknesses.....	32
Table 4 Hardware Minimum System Requirement.....	33

The list of figures

Figure 1 an illustration showing data transformation process and external entities.... 34

CHAPTER ONE

INTRODUCTION

1.0 Introduction

Student Information Systems (SIS) are crucial tools in modern educational management, designed to handle a wide array of administrative tasks and streamline the management of student data. These systems encompass functionalities such as enrollment management, attendance tracking, grade recording, and communication facilitation between students, parents, and educators. According to (Almarabeh, 2017), effective SIS implementations can lead to significant improvements in the operational efficiency of educational institutions. By automating routine tasks and providing real-time access to student data, SIS platforms enable educators to focus more on teaching and less on administrative duties.

This chapter provides a comprehensive review of the existing literature related to Student Information Systems (SIS) and explores the factors influencing the design and implementation (Jerotich, Sirma and Felix_Obegi, 2014) of such systems. By examining previous studies, identifying research gaps, evaluating the strengths and weaknesses of current systems, and outlining system requirements, this review aims to inform the development of the proposed Student Information System for Kisoro Municipal Vocational Institute.

1.1 Background to the Study

Kisoro Municipal Vocational Institute, situated in Kisoro Municipality along KisoroMutolere road near Radio Muhabura, is a renowned institution dedicated to providing quality vocational education to its students. As the institute continues to grow and adapt to changing educational models, the need for a modernized system to manage student information becomes increasingly apparent. Traditional methods of record-keeping are often cumbersome and prone to errors, highlighting the necessity for an automated solution tailored to the institute's specific requirements.

1.2 Problem Statement.

Prior to the implementation of the Student Information System, Kisoro Municipal Vocational Institute faced challenges in effectively managing student information and records. Manual record-keeping methods were prone to errors, time-consuming, and lacked the necessary security measures to safeguard sensitive student data. These challenges hindered the institute's ability to efficiently retrieve and manage student information, impacting administrative efficiency and decision-making processes.

1.3 Objectives

1.3.1 Main Objective

The main objective of this project is to develop a comprehensive Student Information System for Kisoro Municipal Vocational Institute that facilitates efficient management of student information and academic records.

1.3.2 Specific Objectives

To design and implement a user-friendly interface for data entry and retrieval.

To create a secure authentication system for authorized access to the system.

To integrate functionalities for department and course management so as to develop modules for managing student information, academic records, and user accounts.

To provide reporting capabilities for generating student-related statistics and records.

1.4 Scope of the Study

1.4.1 Geographical scope

The Student Information System was developed specifically for Kisoro Municipal Vocational Institute located in Kisoro Municipality along KisoroMutolere road near Radio Muhabura.

1.4.2 Time scope

The research was done from January to April 2024.

1.4.3 Operational scope of the output

The output of this project is a fully functional Student Information System accessible to authorized users for managing student data and academic records.

1.5 Justification for Research

Implementing a Student Information System at Kisoro Municipal Vocational Institute is essential for enhancing operational efficiency, improving data accuracy, and facilitating informed decision-making. By investing in modern technology solutions, the institute can streamline administrative processes, enhance the learning experience for students, and maintain its reputation as a leading educational institution in the region.

CHAPTER TWO: LITERATURE REVIEW

2.0 Introduction

Student Information Systems (SIS) are crucial tools in modern educational management, designed to handle a wide array of administrative tasks and streamline the management of student data. These systems encompass functionalities such as enrollment management, attendance tracking, grade recording, and communication facilitation between students, parents, and educators. According to (Almarabeh, 2017), effective SIS implementations can lead to significant improvements in the operational efficiency of educational institutions. By automating routine tasks and providing real-time access to student data, SIS platforms enable educators to focus more on teaching and less on administrative duties.

This chapter provides a comprehensive review of the existing literature related to Student Information Systems (SIS) and explores the factors influencing the design and implementation (Jerotich, Sirma and Felix_Obegi, 2014) of such systems. By examining previous studies, identifying research gaps, evaluating the strengths and weaknesses of current systems, and outlining system requirements, this review aims to inform the development of the proposed Student Information System for Kisoro Municipal Vocational Institute.

2.1 Related Studies

KMVI, like many vocational institutes, has traditionally relied on manual processes for managing student information, which often led to inefficiencies and data inaccuracies. The introduction of a comprehensive SIS at KMVI aims to transform these processes by providing a centralized platform for data management. Early studies on the implementation of SIS at KMVI indicate promising results. The system has improved the accuracy of student records, streamlined the enrollment process, and enhanced communication between staff and students. Moreover, the SIS has facilitated better

tracking of student progress, particularly in practical skills training, which is critical for vocational education (Nakayenze, Muyinda, and Willems, 2020).

The Impact of SIS on Academic Performance

Several studies have investigated the impact of Student Information Systems (SIS) on academic performance. For instance, a study by (Almarabeh, Majdalawi, and Mohammad, 2018) explored how SIS enhances academic performance in higher education institutions. The research indicated that the implementation of SIS leads to more efficient management of student records, streamlined administrative processes, and improved access to academic resources for students and staff. These improvements contribute to better academic performance by reducing administrative burdens on educators, allowing them to focus more on instructional quality and student support.

SIS and Administrative Efficiency

Another significant area of research focuses on the administrative efficiency brought about by SIS. (Carthy, 2015) conducted a study on the adoption of SIS in vocational institutes and found that these systems significantly reduce the time and effort required for administrative tasks. The study highlighted that SIS automates processes such as enrollment, grading, and attendance tracking, which traditionally required substantial manual effort. This automation not only enhances efficiency but also reduces the likelihood of errors in student data, thereby improving the reliability of administrative operations.

SIS in Vocational Education

The specific impact of SIS on vocational education has been explored by (Nakayenze, Muyinda, and Willems, 2020). Their study focused on the implementation of SIS in a Ugandan vocational institute and examined how these systems cater to the unique needs of vocational training. The research found that SIS modules designed for vocational education include features for tracking practical skills assessments, certifications, and

job placements, which are critical for vocational students. The study concluded that SIS helps vocational institutes maintain comprehensive records of student competencies and facilitates better alignment with industry requirements.

Challenges in SIS Implementation

The challenges associated with implementing SIS in educational institutions have been documented in several studies. (Jones, 2018) conducted a detailed investigation into the barriers to successful SIS implementation. The study identified key challenges such as resistance to change among staff, insufficient training, and technical issues during the initial phases of implementation. To address these challenges, the study recommended adopting a phased implementation strategy, providing comprehensive training programs for all stakeholders, and ensuring continuous technical support. Additionally, involving end-users in the planning and decision-making processes was highlighted as crucial for overcoming resistance and ensuring system acceptance.

SIS and Data Security

Data security is a critical concern in the implementation of SIS, as these systems handle sensitive student information. A study by (Ahmed and Hussain, 2019) examined the security measures integrated into SIS platforms and their effectiveness in protecting student data. The research found that modern SIS incorporates robust security features such as encryption, role-based access control, and regular security audits. These measures are essential for safeguarding against data breaches and ensuring compliance with data protection regulations. The study emphasized the importance of ongoing security training for staff and regular updates to the system to address emerging security threats.

SIS and Stakeholder Satisfaction

Stakeholder satisfaction with SIS has been another area of focus. A study by (Hassan and Stephenson, 2020) surveyed students, teachers, and administrative staff in a university

setting to gauge their satisfaction with the SIS. The results indicated high levels of satisfaction among all stakeholder groups, particularly in terms of system usability, accessibility of information, and the efficiency of administrative processes. The study suggested that involving stakeholders in the selection and customization of the SIS could further enhance satisfaction levels and ensure that the system meets the specific needs of the institution.

2.2 Research Gap

While existing literature provides valuable insights into the design and implementation of the Student Information System (Ike, 2023), there is a notable research gap in the context of vocational education institutions like Kisoro Municipal Vocational Institute. Few studies specifically address the unique requirements and challenges faced by vocational institutes in managing student information and academic records (Güngör, 2020). Bridging this gap is essential to ensure the proposed system is tailored to the institute's needs.

2.3 Strengths and Weaknesses of the Current System

2.3.1 Strengths of the Current System

The current system at Kisoro Municipal Vocational Institute may have some strengths, such as:

Familiarity among staff members due to long-term usage. Basic functionalities for data storage and retrieval.

Customization options to some extent.

2.3.2 Weaknesses of the Current System

Despite its strengths, the current system may suffer from various weaknesses, including: Manual data entry leads to errors and inconsistencies, Lack of integration between different modules, Limited reporting capabilities, and Security vulnerabilities due to outdated technology.

2.3.3 Comparison of Strengths and Weaknesses

While the current system may fulfill basic requirements, its limitations hinder efficiency and productivity. A comparison between strengths and weaknesses underscores the need for a modernized Student Information System tailored to the institute's specific needs.

2.4 System Requirements

The Student Information System addresses the shortcomings of the current system while providing additional functionalities to improve efficiency, accuracy, and security.

2.4.1 Functional Requirements

During the development and implementation of the Student Information System (SIS) at Kisoro Municipal Vocational Institute, the following key functionalities were implemented:

User Authentication and Authorization:

Implemented a secure authentication system to verify the identity of users accessing the system, Utilized encryption protocols and secure login mechanisms to protect user credentials and ensure data confidentiality, Implemented role-based access control (RBAC) to define user roles and permissions based on their responsibilities and privileges within the system, Administrators were granted elevated privileges for system configuration and management, while others such as staff were eligible for access after being registered by the admin.

Department and Course Management:

Developed functionalities for managing academic departments and courses offered by the institute. Administrators could create, modify, and delete department profiles, including department names, descriptions, and contact information, and Implemented course management features to enable administrators to create course catalogs, define course offerings, and manage course schedules and prerequisites.

Student Information Management:

Implemented a comprehensive student information management system to store and manage student profiles and demographic information, each student profile contained personal details, contact information, enrollment history, and academic records, and Developed functionalities for student registrations, and transfers, allowing administrators to track student progress and status throughout their academic journey.

Academic Records Management:

Administrators could generate academic reports, and records as needed for various purposes, such as student evaluations, accreditation, and regulatory compliance.

Reporting and Analytics:

Developed reporting and analytics tools to generate insights into student enrollment trends, and institutional metrics, Administrators could generate predefined reports or create custom reports using data visualization tools and dashboards, Implemented analytics features to identify trends, patterns, and areas for improvement in student outcomes, course offerings, and institutional performance, Provided decision-makers with actionable insights to inform strategic planning, resource allocation, and policy development within the institution.

2.4.2 Non-functional Requirements

During the development and implementation of the Student Information System (SIS) at Kisoro Municipal Vocational Institute, several important considerations were addressed to ensure usability, performance, security, and compatibility. Here's how these aspects were addressed:

Usability and User Experience:

User-centric design principles were applied to create an intuitive and user-friendly interface for the SIS. User interface (UI) elements were designed with usability in mind, ensuring ease of navigation, clarity of information, and consistency across the system. User feedback and usability testing were conducted iteratively to identify and address any usability issues or pain points. Features such as search functionality, filters, and contextual help were implemented to enhance usability and user satisfaction. Training and support materials were provided to users to help them familiarize themselves with the system and maximize its usability.

Performance and Scalability:

Performance testing was conducted to assess the responsiveness and efficiency of the SIS under various load conditions. Optimization techniques, such as caching, indexing, and database tuning, were employed to improve system performance and minimize response times. The system architecture was designed to be scalable, allowing it to accommodate increasing numbers of users, data volumes, and concurrent transactions over time. Load balancing and resource allocation strategies were implemented to distribute workload evenly across servers and ensure optimal performance during peak usage periods.

Security and Data Privacy:

Robust security measures were implemented to protect sensitive student information and ensure data privacy. Encryption protocols were used to secure data transmission between clients and servers, preventing unauthorized access to user credentials and sensitive data. Role-based access control (RBAC) mechanisms were enforced to restrict access to system functionalities and data based on user roles and permissions. Regular security audits and vulnerability assessments were conducted to identify and address potential security vulnerabilities and threats. Compliance with data protection regulations, such as The General Data Protection Regulation (GDPR), was ensured to safeguard admin and student privacy and maintain data integrity.

Compatibility and Interoperability:

The SIS was designed to be compatible with a variety of devices and operating systems, including desktop computers, laptops, tablets, and smartphones. Cross-browser compatibility testing was conducted to ensure that the system functions correctly across

popular web browsers such as Chrome, Firefox, Safari, and Edge. Interoperability with existing systems and third-party applications, such as learning management systems (LMS) or financial management systems, was achieved through standardized data exchange protocols and APIs. Integration with external systems followed industry standards and best practices to ensure seamless interoperability and data consistency across different platforms.

By addressing these considerations, the Student Information System at Kisoro Municipal Vocational Institute was able to deliver a user-friendly, high performance, secure, and interoperable solution that met the institution's needs and requirements effectively.

2.5 Design for a Student Information System

During the development and implementation of the Student Information System (SIS) at Kisoro Municipal Vocational Institute, the following steps were taken to ensure that user requirements were identified, system architecture aligned with the institute's infrastructure, user interfaces were intuitive, and best practices were incorporated in data management, security, and performance optimization:

Identifying User Requirements through Stakeholder Consultations:

Stakeholder consultations were conducted to gather input from key stakeholders, including school management, faculty, administrative staff, and students. Requirements-gathering sessions were organized to understand the specific needs, workflows, and pain points of different user groups. Feedback was collected through interviews, surveys, and focus groups to capture diverse perspectives and prioritize user requirements effectively. User stories, personas, and use cases were developed based on the gathered requirements to ensure alignment with the needs of end users.

Developing a System Architecture that Aligns with the Institute's Infrastructure:

A thorough analysis of the institute's existing infrastructure, including hardware, software, and network resources, was conducted to inform the design of the system architecture. The system architecture was designed to leverage existing infrastructure

components and align with the institute's technology stack, ensuring compatibility, scalability, and maintainability. Considerations were made for factors such as server specifications, database management systems, networking protocols, and integration points with other systems. The architecture design focused on modularity, flexibility, and extensibility to accommodate future growth and changes in the institute's infrastructure.

Designing Intuitive User Interfaces for Ease of Use:

User interface (UI) design was informed by principles of usability, accessibility, and user experience (UX) design. Wireframes, prototypes, and mockups were created to visualize the layout, navigation flow, and interaction patterns of the SIS. Emphasis was placed on designing clear, intuitive, and visually appealing interfaces that catered to the diverse needs and preferences of end users. User feedback was solicited during the design phase to iteratively refine and improve the usability and intuitiveness of the user interfaces.

Incorporating Best Practices in Data Management, Security, and Performance Optimization:

Best practices in data management, including data modeling, database design, and data normalization, were followed to ensure data integrity, consistency, and reliability. Robust security measures, such as encryption, authentication, authorization, and audit logging, were implemented to protect sensitive student information and prevent unauthorized access. Performance optimization techniques, such as caching, indexing, query optimization, and load balancing, were employed to enhance system responsiveness and scalability. Continuous monitoring, testing, and optimization were conducted throughout the development process to identify and address any issues related to data management, security, or performance.

By following these steps, the Student Information System at Kisoro Municipal Vocational Institute was developed and implemented in a manner that effectively addressed user requirements, aligned with the institute's infrastructure, provided intuitive user interfaces, and incorporated best practices in data management, security, and performance optimization.

CHAPTER THREE

RESEARCH METHODOLOGY

3.0 Introduction

This chapter outlines the research methodology employed in the development of the Student Information System for Kisoro Municipal Vocational Institute. It discusses the research design, population study, sampling methods, sample size determination, development methodology, requirements identification, system design, implementation process, and testing and validation procedures.

3.1 Research Design

The research design for this project is based on a mixed-method approach (Shorten A, Smith J, 2017), combining both quantitative and qualitative research methods to gather comprehensive data for system development.

3.2 Population Study

The population study encompasses all stakeholders involved in the use of the Student Information System, including administrative staff, faculty members, and students at Kisoro Municipal Vocational Institute.

3.2.1 Sampling

A purposive sampling technique was utilized to select participants for interviews, surveys, and focus groups. This was by a representation from diverse perspectives within the institute. Stratified and purposive sampling methods were employed, categorizing the population into distinct strata for a more targeted study.

Strata	Total Number of People
Institute Staff	100
Institute Non-teaching Staff	20
Students	200
Others	80
Total	400

Table 1 : The table above shows the Different strata and the number of people in each stratum.

3.2.2 Sample Size

A sample size of 10% was selected from each stratum for data collection, resulting in a total sample size of 40.

Strata	Total Number of People	Sample Size (10%)
Institute Staff	100	10
Institute Non-teaching Staff	20	2
Students	200	20
Others	80	8
Total	400	40

Table 2 A table showing the Sample size for each stratum.

3.3 Development Methodology

The development methodology employed for the Student Information System follows an iterative and incremental approach, combining elements of the waterfall model and agile methodologies (Leeron Hoory, 2022). This iterative process allows for continuous feedback and refinement throughout the development lifecycle.

3.4 Requirements Identification

Various approaches, including system study and investigation, were utilized to identify system requirements. Data collection methods such as questionnaires, interviews, and observations were employed.

3.4.1 System Study and Investigation

The system study involved a thorough investigation of the existing manual processes and information systems at Kisoro Municipal Vocational Institute. This investigation aims to identify gaps, inefficiencies, and user requirements that the new Student Information System should address.

3.4.1.1 Data Collection Methods

Observation: At Kisoro Municipal Vocational Institute (KMVI), observation could be used to directly monitor classroom interactions, practical training sessions, and administrative processes. This would provide detailed and accurate insights into how the existing systems operate and identify areas for improvement. However, the resource-intensive nature of this method means it might be best used selectively for key processes or critical periods.

Advantages:

Direct and Accurate Data Collection: Observation allows researchers to gather data directly from the source, providing firsthand information that is often more accurate and reliable than secondhand reports. This method captures real-time events and behaviors as they occur.

Enhanced Understanding of Verbal Responses: By observing participants in their natural environment, researchers can better understand the context of verbal responses, including non-verbal cues and interactions that might be missed in other data collection methods.

Disadvantages:

Costly, Time-Consuming, and Exhaustive: Conducting observations can require significant resources, including time, money, and effort. It often involves extensive preparation, prolonged periods of data collection, and meticulous note-taking and analysis.

Limited Scope: Observations typically focus on a small sample size or specific setting, which may not be representative of larger populations or broader trends.

Interviews: Conducting oral interviews with KMVI staff, students, and other stakeholders can yield in-depth feedback about their experiences and perceptions of the current systems. This method allows for probing deeper into specific issues and gathering nuanced information. However, it requires skilled interviewers and can be time-consuming, especially if the institute has a large number of stakeholders.

Advantages:

Motivated Interviewees to Respond Openly: Interviews provide a personal touch, allowing researchers to build rapport and trust with participants. This often leads to more honest and detailed responses, as interviewees feel more comfortable sharing their thoughts and experiences.

Facilitated Probing for Additional Feedback: The interactive nature of interviews allows researchers to ask follow-up questions and delve deeper into specific topics, gaining richer and more nuanced information than what might be possible through other methods.

Disadvantages:

Time-Consuming: Conducting interviews can be a lengthy process, particularly when dealing with a large number of participants. Each interview requires scheduling, conducting, transcribing, and analyzing the responses.

Dependent on Human Relations Skills: The effectiveness of an interview largely depends on the interviewer's ability to establish rapport, ask the right questions, and manage the conversation. Poor interviewing skills can lead to biased or incomplete data.

Questionnaires: Distributing printed questionnaires to KMVI stakeholders offers a practical way to gather a broad range of data quickly and cost-effectively. This method can be particularly useful for capturing general opinions and identifying common issues

or trends. However, ensuring a high response rate and meaningful feedback can be challenging, and follow-up may be necessary to address any ambiguities in responses.

Advantages:

Quick Responses: Questionnaires can be distributed to a large number of respondents simultaneously, allowing for the rapid collection of data. This is particularly useful when time is a critical factor.

Relatively Inexpensive for Large-Scale Data Collection: Compared to methods like interviews or observations, questionnaires are cost-effective, especially when conducted online. They require fewer resources and can reach a wider audience with minimal expense.

Disadvantages:

Respondents: The response rate for questionnaires can be low, and there is often a self-selection bias where only those with strong opinions may respond. This can limit the representativeness of the data collected.

Lack of Observation of Body Language: Questionnaires do not allow researchers to observe respondents' body language and other non-verbal cues, which can provide important context and additional insights into their answers.

3.5 System Design

In the system design phase of the Student Information System for Kisoro Municipal Vocational Institute, several key tasks were undertaken to ensure the effective translation of user requirements into a functional and user-friendly system. These tasks include:

Designing the Database Schema:

The database schema is designed to define the structure of the database, including tables, fields, relationships, and constraints.

It outlines how data will be organized and stored to facilitate efficient retrieval and manipulation.

Defining User Interfaces and Navigation Flows:

User interfaces (UI) are designed to provide an intuitive and user-friendly experience for interacting with the system.

Navigation flows are defined to outline how users will move through different sections of the system and perform various tasks.

Specifying System Architecture and Components:

The system architecture is specified to define the overall structure of the system, including hardware and software components, as well as their interactions.

It outlines the deployment model, scalability considerations, and integration points with other systems.

Developing Wireframes and Prototypes for User Feedback:

Wireframes and prototypes are developed to provide visual representations of the system's user interfaces and functionality.

They allow stakeholders to visualize the system's design and provide feedback on its usability and effectiveness.

Iterative refinement of wireframes and prototypes based on user feedback ensures that the final system meets user requirements and expectations.

By completing these tasks effectively, the system design phase ensures that the Student Information System is well-conceived and aligned with the needs of Kisoro Municipal Vocational Institute. It sets the foundation for the subsequent development and implementation phases, ultimately leading to the successful deployment of a robust and user-friendly system.

3.6 System Implementation

System implementation for the Student Information System (SIS) involved several critical steps to ensure a functional, user-ready deployment:

Writing Code Based on the Design Specifications

Development began by writing and refining code according to the established design specifications, ensuring that all functionalities aligned with the system requirements. This phase included coding for core features, interfaces, and workflows to deliver a comprehensive solution.

Integrating Modules and Components

The system's various modules and components, such as registration, records management, and reporting, were integrated to work seamlessly together. This step involved ensuring that each part of the system could interact effectively, enabling smooth data flow and user interactions.

Configuring the System Environment

Setting up the required system environment, including server configurations, database setup, and network connections, was essential for optimal performance. This also included installing necessary software and ensuring security settings were in place to protect sensitive data.

Conducting User Acceptance Testing (UAT)

Before full deployment, UAT was conducted to confirm that the system met user needs and functioned as expected in real-world scenarios. This testing involved feedback from

end-users, identifying any remaining issues, and making final adjustments to enhance usability and functionality.

3.7 System Testing and Validation

System testing and validation ensure that the Student Information System meets the specified requirements and functions correctly. This includes:

Unit testing of individual components, Integration testing to verify interactions between modules, System testing to validate end-to-end functionality, and User acceptance testing to ensure usability and user satisfaction

CHAPTER FOUR

SYSTEM ANALYSIS AND DESIGN

4.0 Introduction

This chapter delves into the analysis and design phase of the Student Information System for Kisoro Municipal Vocational Institute. It begins with an overview of system analysis, followed by a detailed examination of system requirements and characteristics. The chapter concludes with the specification of functional and nonfunctional requirements, hardware and software specifications, environmental requirements, and structured analysis through process modeling and data modeling.

4.1 System Analysis

4.1.1 Strength of the Current System

The current system exhibits several strengths, including the ability to store and retrieve records, perform updates and validation, ensure security in file removal, automate data processing, and prevent loss of documents.

4.1.2 Weakness of the Current System

Despite its strengths, the current system also has weaknesses, such as manual data processing, lack of validation in certain areas, absence of security measures for file removal, and potential risk of data loss due to manual record-keeping practices.

4.1.3 Comparison of Strengths and Weaknesses

System Characteristic	Implemented System	Manual System
Store and Retrieve Records	Yes	Yes
Update and Validation	Yes	No
Security in File Removal	Yes	No
Data Processing Not Manual	Yes	No
No Loss of Documents	Yes	No

Table 3 : the comparisons of the system's strengths and weaknesses

4.2 System Analysis and Study

The system analysis and study phase involved a detailed examination of user requirements, system functionalities, and existing processes to inform the design and development of the Student Information System.

4.3 Requirements Specification

4.3.1 Functional Requirements

Functional requirements outline the specific functions and capabilities that the system must provide. These include functionalities related to user authentication, data entry, record management, reporting, and system administration.

4.3.2 Non-Functional Requirements

Non-functional requirements specify the quality attributes of the system, such as performance, usability, security, reliability, and scalability.

4.3.3 User Requirement

User requirements capture the needs and expectations of system users, including administrative staff, faculty members, and students. These requirements drive the design and development of user interfaces and workflows.

4.3.4 System Requirement

System requirements detail the hardware, software, and environmental prerequisites for deploying and running the Student Information System effectively.

4.3.5.1 Hardware Requirement

Hardware	Minimum System Requirement
Processor	2.4 GHz Processor Speed
Memory	4GB R AM (Recommended)
Disk Space	80 GB (including 20 GB for DBMS)
Display	800 x 600 Colors (1024 x 768 High Color - 16 bit Recommended)
Backup Hard Disk	80 GB

Table 4 Hardware Minimum System Requirement

4.3.5.1 Software Requirements

Software requirements specify the necessary software components and versions for deploying the Student Information System.

4.3.6 Environmental Requirements

Environmental requirements outline the conditions and infrastructure necessary for deploying and operating the Student Information System effectively.

4.4 Structured Requirements Analysis

4.4.1 Process Modeling

The process modeling section explains the system's scope and interactions with external entities. Data Flow Diagrams (DFDs) illustrate data transformations among processes and external entities and the different transformations as data moves among processes.

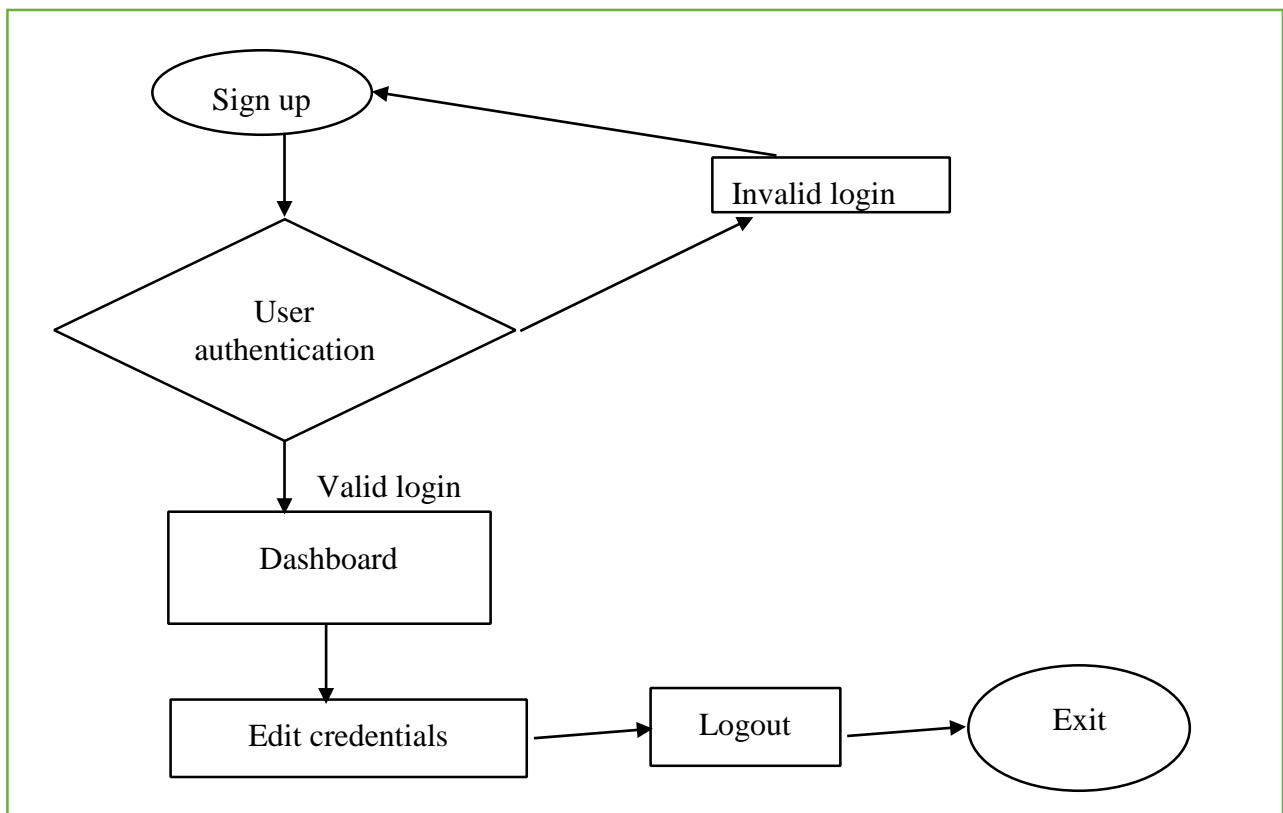


Figure 1 an illustration showing data transformation process and external entities

4.4.2 Data Modeling

Data modeling encompasses the design of the database schema and entity-relationship diagrams (ERDs) to represent the relationships between different data entities.

4.4.3 Physical Design

Physical design involves translating the conceptual design into a concrete implementation, including database creation, interface design, and system architecture.

CHAPTER FIVE

SYSTEM IMPLEMENTATION RESULTS

5.1 Introduction

This chapter presents the results of the implementation phase of the Student Information System for Kisoro Municipal Vocational Institute. It outlines the implementation steps, hardware and software requirements, environmental considerations, system testing and validation procedures, results and outcomes, challenges encountered, lessons learned, and future enhancements, and concludes with a summary of the implementation process.

5.2 Implementation Steps

5.2.1 Requirement Identification:

During this phase, the requirements for the Student Information System were identified through stakeholder consultations, user interviews, surveys, and analysis of existing processes.

5.2.2 Design:

The design phase involved translating the identified requirements into a comprehensive design specification, including database schema, user interfaces, system architecture, and workflows.

5.2.3 Development Methodology

The development methodology utilized an iterative and incremental approach, combining elements of the waterfall model and agile methodologies to ensure continuous feedback and refinement throughout the development process.

5.3 Hardware and Software Requirements

5.3.1 Hardware Requirements:

Processor: 2.4 GHz processor speed, Memory: 4GB RAM (Recommended), Disk space: 80 GB

(including 20 GB for the database management system), Display: 800 x 600 colors (1024 x 768 High color - 16 bit Recommended), and a Backup hard disk: 500 GB (Recommended)

5.3.2 Software Requirements:

Operating System: Windows, XAMPP server: Latest version 8.2.4, MySQL, PHP, and Sublime version 3.5 or Visual Studio code editor.

5.4 Environmental Requirements

The environmental requirements include the necessary infrastructure, such as network connectivity, power supply, and physical space, to deploy and operate the Student Information System effectively.

5.5 System Testing and Validation

System testing and validation ensure that the implemented system meets the specified requirements and functions correctly. This includes unit testing, integration testing, system testing, and user acceptance testing.

5.6 Results and Outcomes

The implementation of the Student Information System resulted in:

Improved efficiency in managing student information and academic records, Enhanced data accuracy and reliability, Streamlined administrative processes, and Increased accessibility to critical information for stakeholders

5.7 Challenges Encountered

Several challenges were encountered during the implementation of the Student Information System (SIS), which impacted the process and required strategic solutions:

Technical Issues with Software Compatibility

Integrating the SIS with existing systems posed compatibility issues, requiring adjustments and additional testing to ensure seamless data flow across platforms.

Addressing these issues demanded technical expertise and sometimes customizations to ensure compatibility.

Data Migration Challenges

Transferring existing data from legacy systems into the new SIS proved complex, particularly in ensuring data integrity and accuracy. This process required careful mapping, data cleansing, and validation to minimize errors and ensure reliable data in the new system.

User Resistance to Change

Some users, accustomed to the old system, resisted transitioning to the new platform due to concerns about usability or a reluctance to learn new processes. Addressing this required dedicated training sessions, communication on the benefits of the new system, and ongoing support.

Resource Constraints

Limited budgets, staffing, and time impacted the pace and scope of the implementation. These constraints necessitated prioritizing key functionalities, finding cost-effective solutions, and sometimes adjusting the project timeline to align with available resources.

5.8 Lessons Learned

The key lessons learned from the implementation of the Student Information System (SIS) emphasize several critical factors for successful system deployment:

Comprehensive Requirements Gathering

Thoroughly understanding and documenting user needs, technical specifications, and institutional requirements is essential for creating a system that meets all expectations.

Engaging users early in the process helps prevent misunderstandings and ensures that the system aligns with real-world needs.

Effective Communication with Stakeholders

Open, ongoing communication with stakeholders, including students, faculty, and administrators, is crucial for maintaining alignment throughout the project. Regular updates and feedback loops build trust and ensure that the project remains on track with stakeholder expectations.

Flexibility and Adaptability in Development Methodologies

Adopting a flexible approach, such as Agile or iterative development, allows the team to adapt to changing requirements or feedback. This adaptability helps address challenges promptly and ensures that the system evolves in response to user input and technical challenges.

Continuous Testing and Quality Assurance

Regular testing throughout the implementation process is vital for identifying and addressing issues early. Comprehensive quality assurance processes, including user acceptance testing, improve system stability and ensure a smoother rollout, resulting in a more reliable and user-friendly system.

5.9 Future Enhancements

Future enhancements to the Student Information System may include:

Integration with Other Educational Systems

Connecting the SIS with additional systems, such as learning management systems (LMS),

library databases, and financial aid platforms, can streamline data flow, reduce manual data transfers, and create a more cohesive educational experience. This integration will also support easier access to comprehensive student information across departments.

Implementation of Additional Features and Functionalities

Expanding the SIS with new features, such as advanced analytics, predictive insights, and real-time notifications, can further support academic planning and enhance the overall functionality of the system. These additions will help address evolving user needs and provide more personalized services.

Enhancement of User Interfaces and User Experience

Improving the design and usability of the SIS interface can make it more intuitive and accessible for all users, including students, faculty, and administrators. By prioritizing a user-friendly experience, the system can enhance efficiency and reduce training requirements.

Continuous Monitoring and Updates to Ensure System Relevance

Regular system monitoring and updates are essential for maintaining compatibility with emerging technologies and addressing any security vulnerabilities. Staying current with software updates will help the SIS remain relevant and reliable, adapting to the changing educational landscape.

5.10 Conclusion

In conclusion, the implementation of the Student Information System represents a significant milestone in enhancing the management of student information and academic records at Kisoro Municipal Vocational Institute. By addressing identified requirements and challenges, the system aims to improve efficiency, accuracy, and accessibility for stakeholders, paving the way for a more streamlined and effective educational environment.

CHAPTER SIX

DISCUSSIONS, CONCLUSION, AND RECOMMENDATIONS

6.1 Discussions

6.1.1 Advantages of the Implemented System

The implemented Student Information System offers several advantages, including:

Enhanced Efficiency in Managing Student Information and Academic Records

The SIS significantly speeds up the management of student data, enabling faster updates and retrieval of academic records, which reduces manual labor and saves time.

Improved Data Accuracy and Reliability Through Automated Processes

Automation minimizes human errors, ensuring that data entry, updates, and processing are accurate and consistent. This enhances the reliability of student records.

Streamlined Administrative Workflows, Leading to Time and Cost Savings

The system automates routine administrative tasks like registration, grading, and scheduling, allowing staff to work more efficiently and reducing operational costs.

Increased Accessibility to Critical Information for Stakeholders

Faculty, students, and administrators have easy access to real-time information, facilitating faster responses to inquiries and better communication across departments.

Better Decision-Making Capabilities Based on Comprehensive Data Analysis

The system's data analytics tools provide valuable insights into academic performance, resource usage, and enrollment trends, supporting data-driven decisions.

Enhanced Security Measures to Protect Sensitive Information

Built-in security features such as data encryption, role-based access controls, and

regular backups protect student and institutional data, ensuring privacy and compliance with data protection regulations.

6.1.2 Comparison with Manual System

Compared to the manual system previously in place, the implemented Student Information System offers significant improvements:

Automation of Repetitive Tasks

By automating tasks such as data entry, grading, and report generation, the SIS reduces the risk of human error and ensures consistency, which was often an issue in manual systems.

Centralized Storage and Retrieval of Data

With all information stored in a central database, data is easily accessible and up-to-date, minimizing redundancies and the need for duplicate records. This centralization also facilitates quicker access to student information.

Integration of Modules and Functionalities

The SIS integrates various academic and administrative functions into one system, providing a unified view of student data, including academic history, attendance, and financial records. This comprehensive view was not possible with disconnected manual processes.

Enhanced Security Measures

Robust security protocols, such as role-based access control, data encryption, and regular data backups, help safeguard sensitive student and institutional information. The manual system lacked these protections, making data more vulnerable to unauthorized access and loss.

Advanced Reporting Capabilities

The SIS's built-in reporting tools allow stakeholders to generate customized reports and perform data analysis with ease, supporting informed decision-making. In a manual setup, such reporting would require significant time and effort, limiting access to timely insights.

6.2 Conclusion

In conclusion, the implementation of the Student Information System at Kisoro Municipal Vocational Institute represents a significant advancement in educational administration. By leveraging modern technology and best practices in system design and development, the institute can effectively manage student information and academic records, leading to improved efficiency, accuracy, and decision-making capabilities.

6.3 Recommendations

Based on the implementation process and observed outcomes, the following recommendations can help ensure ongoing success and improvements to the Student Information System (SIS):

Regular Training and Capacity Building for Staff Members

To fully leverage the system's features, it is essential to provide ongoing training sessions for staff. This will enhance their proficiency in using the system's tools and functionalities, ensuring effective and efficient use.

Continuous Monitoring and Evaluation of System Performance

Establishing a process for regular monitoring and evaluation will help identify any technical or functional issues early. This approach allows the institution to make timely adjustments and keep the system running optimally.

Collaboration with Stakeholders for Feedback and System Enhancements

Engaging with students, faculty, and administrative staff for feedback will provide

insights into user needs and pain points. Regularly incorporating this feedback into system updates can improve user satisfaction and system usability.

Exploring Further Integration with Other Educational Systems

Expanding integration with other educational technologies, such as learning management systems (LMS) and financial aid systems, could improve interoperability and provide a seamless user experience. This would enhance the system's value by creating a more comprehensive academic environment.

By implementing these recommendations, Kisoro Municipal Vocational Institute can ensure the long-term success and sustainability of the Student Information System, ultimately contributing to the institute's mission of providing quality vocational education and fostering student success.

References

- Ahmed and Hussain. (2019). *The security measures integrated into SIS platforms and their effectiveness in protecting student data*. Berlin: Harmar publishers.
- Almarabeh. (2017). Effects for the implementation of student information system. *Journal of halmah*, 3-8.
- Almarabeh, Majdalawi, and Mohammad. (2018). *The impact of student information system on academic performance*. Makkah: Alma publishers.
- Carthy, M. (2015). *the administrative efficiency brought about by SIS*. Nairobi: kim publishers.
- Hassan and Stephenson. (2020). *student information system and stakeholder satisfaction*. Hongkong: fidelh publishers.
- Jerotich, Sirma and Felix_Obegi. (2014, December 15). *An analysis of factors influencing the implementation of computer systems*. Retrieved from Core:
<https://www.core.ac.uk/download/pdf/234671735.pdf>
- Jones. (2018). *Barriers to succesful SIS implementation*. Mexico: lamor publishers.
- Nakayenze, Muyinda, and Willems. (2020). *impact of sis on vocational education*. Alvarado: willems publishers.
- Giva Authorship Team. (2023). communication tool. *Givainc*, 11-27.
- Design and Implementation of Student Information System*. (2023, October 15). Retrieved from Researchgate:
https://www.researchgate.net/publication/374738278_Design_and_Implementation_of_Student_Information_System
- Güngör, G. (2020). problems and solution suggestions encountered. *euopean journal of education studies*, 4-23.
- Hwang & Wu. (2019). *data-driven decisions*. Tianjin: Mandinach.

- Ike, I. (2023, October 15). *design and implementation of student information system*. Retrieved from Researchgate: https://www.researchgate.net/publication/374738278_Design_and_Implementation_of_Student_Information_System
- Kanhaiya Lal Das, Peeraiah.G, Kumar Akash, Ujjwal Kr. Paswan, Shantharam Nayak. (2023). Student Information System. *International journal of Research, engineering, and technology*, Volume 1.
- Leeron Hoory, . (2022, August 10). *waterfall model and agile methodologies*. Retrieved from Forbes: <https://www.forbes.com/advisor/business/agile-vs-waterfall-methodology/#:~:text=Waterfall%20is%20a%20better%20method,will%20look%20before%20they%20start.>
- Mallach, E. G. (2015). *Information Systems: What Every Business Student Needs to Know*.
- Shorten A, Smith J. (2017). mixed-method approach. *expanding the evidence base*, 7475.
- Vats, T. (2024). Safeguarding Privacy and Security. *Cybersecurity and Applications*, 330.