

**DRUG ABUSE AND THE ECONOMIC WELL BEING OF YOUTHS :A CASE  
STUDY OF YOUTHS IN CENTRAL DIVISION KAPCHORWA MUNICIPALITY**

**TITUS AMIS MONGUSHO**

**J22/MUC/BSW079**

**A DISSERTATION SUBMITTED TO THE SCHOOL OF SOCIAL SCIENCE IN PARTIAL FULFILLMENT  
OF THE REQUIREMENT FOR THE AWARD OF A BACHELOR'S DEGREE OF SOCIAL WORK  
AND SOCIAL ADMINISTRATION OF UGANDA CHRISTIAN UNIVERSITY**

**August, 2024**



**UGANDA CHRISTIAN  
UNIVERSITY**

*A Centre of Excellence in the Heart of Africa*

**DECLARATION**

I Amis Monguseho Titus declare that the content of this report is the result of my personal field excursion, and has never been submitted to any institution for any academic award.

Signature:  .....

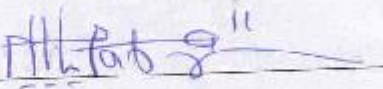
**AMIS MONGUSEHO TITUS**

J2204107@BSW119

Date: 2<sup>nd</sup> / SEP / 2024 .....

### APPROVAL

This Research Report entitled "Drug Abuse and The Economic Wellbeing of Youths in Central Division, Kapchorwa Municipality" has been submitted to Uganda Christian University with my approval as the Academic Supervisor.

Sign: 

Name: NUWAGABA NABOTH

Date: 02/09/2024

## **DEDICATION**

I dedicate this Report to my family (My Father, Mr. Chelangat Martin, Mother, Mrs. Chelangat Irene, Brothers, Mayamba Daniel and Oonyu Gabriel) with affection and appreciation for their unreserved contribution towards my thriving, growth and success each day of my life and academic career up until this level. With utmost gratitude, I would like also to dedicate this work to my friend Cherop Amon who has been my companion in this academic journey. Thanks a bunch for all the support you have rendered to me. Additionally, to all my younger siblings, friends and lecturers who have kept by my side through thick and thin. Most importantly, special dedication and thanks to the Almighty God for the love and life He has blessed me with throughout my existence.

## **ACKNOWLEDGEMENT**

My undergraduate studies at Uganda Christian University has been an exceptional experience to me and initiated a new beginning in my life. It opened doors for me to associate with different people of different cultures, thus opening my mind to new experiences every day.

I wish to express my sincere appreciation and gratitude to my supervisor who with no reservation provided me with the necessary guidance; support and professional advice that was highly essential to this study to a logical conclusion.

I am also thankful to all my course mates for the constructive discussions and criticisms, which helped to bring this study to logical conclusion.

My special thanks go to my parents, for the financial and material support help rendered to me during my studies. It's the biggest of gifts you could ever give to me. I promise to perform my duties as your child.

My sincere gratitude also goes to my friends, sisters and brothers especially for their encouragement, moral and material support which made the work easy and manageable.

## TABLE OF CONTENTS

DECLARATION .....	<b>Error! Bookmark not defined.</b>
APPROVAL .....	i
DEDICATION .....	ii
ACKNOWLEDGEMENT .....	iv
ACRONYMS .....	viii
ABSTRACT .....	ix

### CHAPTER ONE INTRODUCTION

1.0 Introduction .....	<b>Error! Bookmark not defined.</b>
1.1 Background of the Study .....	1
1.1.1. Historical perspective.....	1
1.1.2. Theoretical perspective.....	2
1.1.3. Conceptual perspective .....	2
1.1.4. Contextual perspective .....	3
1.2. Statement of the Problem .....	3
1.3. Purpose of the Study.....	4
1.4. Objectives of the Study.....	4
1.5. Research Questions .....	4
1.6 Scope.....	4
1.6.1. Geographical scope .....	4
1.6.2. Content Scope .....	4
1.6.3. Time scope .....	5
1.7. Conceptual Framework.....	5
1.9. Significance of the Study .....	5

### CHAPTER TWO LITERATURE REVIEW

2.0 Introduction .....	6
2.1.0. Theoretical framework .....	6
2.1.1. Sociological theory .....	6
2.2. Extent of drug abuse among the youths.....	8
2.3. Economic development of youths .....	9
2.4. The Impact of Drug abuse on socio-economic development of youths. ....	14
2.5. Measures that can be taken to control drug abuse .....	16

### CHAPTER THREE METHODOLOGY

3.1. Introduction .....	18
3.2. Research Design .....	18
3.3. Area of the study.....	18
3.4. Study population.....	18
3.5. Study sample.....	19
3.5.1. Sample size. ....	19
3.5.2. Sampling technique. ....	19
3.6. Methods of data collection. ....	19
3.6.1 Interview guide. ....	20
3.6.2 Questionnaires .....	20
3.6.3 Observation.....	20
3.7. Validity and reliability of data .....	20
3.8. Data processing analysis .....	21

3.9. Ethical considerations.....	21
<b>CHAPTER FOUR</b>	
<b>PRESENTATION, ANALYSIS AND DISCUSSION OF THE FINDINGS</b>	
4.0. Introduction.....	23
4.1. Social Demographic Characteristics .....	23
4.2. The extent of youth involvement in drug abuse in Central Division, Kapchorwa Municipality.....	24
4.3. Impact of drug abuse on the socio-economic wellbeing of youths in Central Division ..	25
4.4. Possible measures to the problems of drug abuse in Central Division .....	27
<b>CHAPTER FIVE</b>	
<b>SUMMARY, CONCLUSIONS AND RECOMMENDATIONS</b>	
<b>5.0. Introduction.....</b>	<b>29</b>
<b>Discussion .....</b>	<b>29</b>
5.0.1 The extent of drug abuse amongst the youths in Central Division, Kapchorwa Municipality.....	29
5.0.2 How drug use affected youth socio-economically in Central Division, Kapchorwa Municipality.....	30
5.0.3 Measures to curb down the effects of drug abuse among the youths.....	30
<b>Conclusions.....</b>	<b>31</b>
<b>Recommendations.....</b>	<b>32</b>
Government .....	32
Ministry of Health .....	32
Local community .....	32
<b>References.....</b>	<b>33</b>
<b>APPENDIX I: QUESTIONNAIRE .....</b>	<b>35</b>
<b>APPENDIX II: INTERVIEW GUIDE WITH THE KEY INFORMANTS (LOCAL AUTHORITIES).....</b>	<b>41</b>

## **LIST OF TABLES**

Table I: Age distribution of respondents

Table 2: Educational level of the respondents

Table 3: The extent of youth involvement in drug abuse in Central Division, Kapchorwa

Table 4: Impact of drug abuse on economic development of youths in Central Division

Table 5: Solutions to the problems of drug abuse in Central Division, Kapchorwa

## ACRONYMS

MOH	-	Ministry of Health
WHO	-	World Health Organisation
NGOs	-	Non-Government Organisations
CBO	-	Community Based Organisations
HRW	-	Human Rights Watch
PRS	-	Poverty Reduction Strategy
PEAP	-	Poverty Eradication Action Plan
MGLSD	-	Ministry of Gender, Labour and Social Development
UPE	-	Universal Primary Education

## **ABSTRACT**

This research study titled “Drug Abuse and the Economic Wellbeing of Youths: A Case Study of Youths in Central Division, Kapchorwa Municipality. The purpose of this study was to establish the extent to which drug abuse has affected the youths economically especially in the aspects of, poverty, crimes and unemployment. The study was descriptive and analytical in nature where both qualitative and quantitative methods of data collection were used through Questionnaires, interviews and observation. Collected data was analyzed using SPSS and was presented in form of frequency tables, percentages and graphs. The findings established that youths constituted a large segment of drug abusers though adults also are involved. The level of consumption or abuse of drugs was discovered to be growing at a faster rate which has resulted into an increase in the spread of diseases, health illnesses like cancer, HIV/AIDS, Tuberculosis among others are also in the increase due to increasing use of illegal drugs. The economic challenges youths face as a result of drug abuse included productivity loss, health costs and crime costs. Emphasizing measures such as counselling, community watch, law enforcement against drug abuse would help to solve the problem of drug abuse. The study therefore suggested and recommended that; implementation of strict laws on production of drugs can help to reduce the vice, community sensitization, neighborhood watch in addition to regulation of strict laws on production and consumption of drugs. Nevertheless, police officers involved in corruption should be and emphasizing counselling sessions to the youths addicted to drug abuse through education, treatment, and self-help support projects. Further research could be conducted on drug abuse and its impact on psychosocial wellbeing.

# CHAPTER ONE

## INTRODUCTION

### 1.0 Introduction

The aim of this research is to understand the impact of drug abuse on economic wellbeing of youths in Central Division, Kapchorwa Municipality. This chapter is organized to include the: background, problem statement, purpose, specific objectives; research questions, scope, conceptual framework and significance.

### 1.1 Background of the Study

The background of this study is divided into four parts; historical perspective, Theoretical perspective, Conceptual and contextual perspectives. These are detailed as follows;

#### 1.1.1. Historical perspective

Drug abuse is perceived as the excessive, maladaptive, or addictive use of drugs for non-medicinal purposes. It is an emotional and sometimes physical state that is characterized by the urge to take drugs on a constant basis in order to experience its mental effects. Drug abuse gave rise to dependence both physical and psychological and the dependence leads to mental, emotional, biological or physical, social and economic instability. It is these effects of drug abuse on an individual that have formed a basis for those cumulative consequences on the society (Kandel, 2005).

There is no single age group of people more affected by alcohol and drugs than youths. In some ways, it feels like it has become an issue everywhere (Conger, 2015). Research by several international organizations; shows that illicit drug use is quickly becoming a global problem to be resolved (Poulin C. et al (1997)) probably because of the influence of popular culture. Therefore, drug abuse among the youth has become an acute problem.

In Uganda, recent studies in schools around Kampala indicated that 62% of secondary school students consume alcohol (Poulin C & D Elliott (1997)) while 15% of these students use marijuana and another 7% said they used other addictive substances. Observation of these rates shows that at least 70% of drug abusers are said to combine the toxicants which they use. Confessions by students interviewed by the Daily monitor Uganda, 3<sup>rd</sup> July, 2013 about drug abuse is worrying and if the trend continues as it is, it could become more difficult to deal with it in the future.

Currently, a survey by (Global School based student Health Survey, 2013) conducted among youths aged 13-28years indicates that the percentage of substance use has increased from 12.8% to 33.5% and in that group at least 12% had one drink containing alcohol on one or more days within a period of 30 days (GSBS, 2013).

### **1.1.2. Theoretical perspective**

This study is based on Sociological theories of drug abuse which utilize broader and often more abstract phenomena and concepts to explain drug and alcohol use and abuse as cited by Becker & Lemert (2000) that deviance, such as drug and alcohol use and abuse, could best be understood as a type of "career," or a set of behaviors, roles, and identities that comprise a lifestyle, running counter to conventional society in some ways and consistent in others. In short, deviance, like drug use, was best understood as a phenomenon that changed over time, with a beginning or entry point and often a desistance or end point. The "middle" period featured enmeshment in deviance, with the adoption of drug-related roles and identities. Their concept of "career" embodies this notion of deviance as a lifestyle, with fluctuations over time.

### **1.1.3. Conceptual perspective**

Ministry of Health (MOH, 2005) stated that several types of substances (drugs) were susceptible to abuse by youths. Those drugs ranged from most common to less expensive. Such drugs included: Heroin, Cigarettes, Alcohol, Caffeine Marijuana, Hydrocarbons Cocaine and Crack. The danger of drug abuse had been defined as "a state of periodic or chronic intoxication, detrimental to the individual and society, of a drug". The major indication of drug addiction was the irresistible desire to take drugs by any means. Physical dependence manifested itself when drug intake was decreased or stopped resulting in withdrawal syndrome, which led to a very distressing experience. Psychological dependence was experienced when an abuser relied on a drug to produced feeling of well-being.

Drugs, when first invented/discovered or produced, were for a legitimate purpose, like medical, religious or scientific use. Abuse started through various experimentations of diverted use and money generating efforts there from. Though the term prevention is comparatively modern, the history of drug abuse is spread over the whole span of human civilization. Recognizing the adverse effects of drug abuse, people from the very beginning are trying to restrict or limit the abuse of drugs almost every religion in their oldest form prohibits or discourages use of intoxicating substances. Dave, Dhaval (2004).

In Sub-Saharan Africa, several types of substances are susceptible to abuse by youths. Those

drugs range from most common to less expensive. Such drugs include; Heroin, Cigarettes, Alcohol, Caffeine Marijuana, Hydrocarbons Cocaine and Crack. It has been identified that the major indication of drug addiction is the irresistible desire to take drugs by any means. Physical dependence manifested itself when drug intake is decreased or stopped resulting in withdrawal syndrome, which led to a very distressing experience (WHO, 2012).

#### **1.1.4. Contextual perspective**

In East Africa and Uganda in particular, alcohol is considered to be the most abused substance followed by marijuana (Njaga), tobacco ranks third with Kart (Mairungi), heroin, cocaine and fuel sniffing coming last respectively (Lisa, 2013).

Majority of Uganda's population is youths and the quality of youth productivity is relatively low compared to other regional statistics compared with high rates of youth unemployment.

Majority of the youth labour force is located in urban centres with low rates of job creation. Most youths are commonly found in the cohorts of illicit drug abuse which is on the increase partly because of circumstances that are due to factors beyond their control including poverty and unemployment (Bbale, 2012). Ironically though drug abuse is known by the police but the laws are so lenient that when they got arrested, the sentences are very small, hence killing the efforts to control drug abuse. This also leaves the police wondering whether the community knows the effect that those drugs have on the economic development of youths and the community in general.

#### **1.2. Statement of the Problem**

Community leaders in many areas of Central Division, Kapchorwa Municipality are worried about the incidences of drug abuse that are going out of control. According to social surveys conducted by the Human Rights Watch (2012), hundreds of youth are engaged in smoking and abusing illicit substances. And if dire efforts are not taken, the situation will worsen and become impossible to address in the future. Despite the fact that Kapchorwa municipality is still a growing urban center, the shanty localities are infested by bhang smoking youth, who at times decide who should or should not move at night. Drug abuse has become a pastime for these redundant youth and students, thus spurring crime across the country. Murder, rape, petty theft and robberies are on the rise in the different parts of the Municipality, most of which are related to drug abuse. Despite the attempts made by the NGOs and government bodies like the Police and the Ministry of Health at large to reduce drug trafficking and abuse in the country, its instead increasing at a faster rate and remained a humanity threat not only to people's lives but also their socio-economic wellbeing. It is

against this background that this seeks to explore the extent to which drug abuse has affected the economic wellbeing of youths in Central Division, Kapchorwa Municipality.

### **1.3. Purpose of the Study**

The study is intended to establish the extent to which drug abuse has affected economic wellbeing of youths in Central Division, Kapchorwa Municipality, Uganda.

### **1.4. Objectives of the Study.**

- i. To examine the extent of drug abuse amongst the youth of Central Division, Kapchorwa Municipality.
- ii. To assess the impact of drug abuse on the economic wellbeing of youths in Central Division, Kapchorwa Municipality.
- iii. To establish possible measures to the problems of drug abuse in Central Division, Kapchorwa Municipality.

### **1.5. Research Questions**

- i. What is the extent of drug abuse amongst the youth of Central Division, Kapchorwa Municipality.
- ii. What are the causes of drug abuse amongst the youths of Central Division, Kapchorwa Municipality.
- iii. What is the impact of drug abuse on the economic wellbeing of youths in Central Division, Kapchorwa Municipality.
- iv. What are the possible measures to the problems of drug abuse in Central Division, Kapchorwa Municipality.

## **1.6 Scope**

### **1.6.1. Geographical scope**

The study was conducted in Central Division, Kapchorwa Municipality in Eastern Uganda.

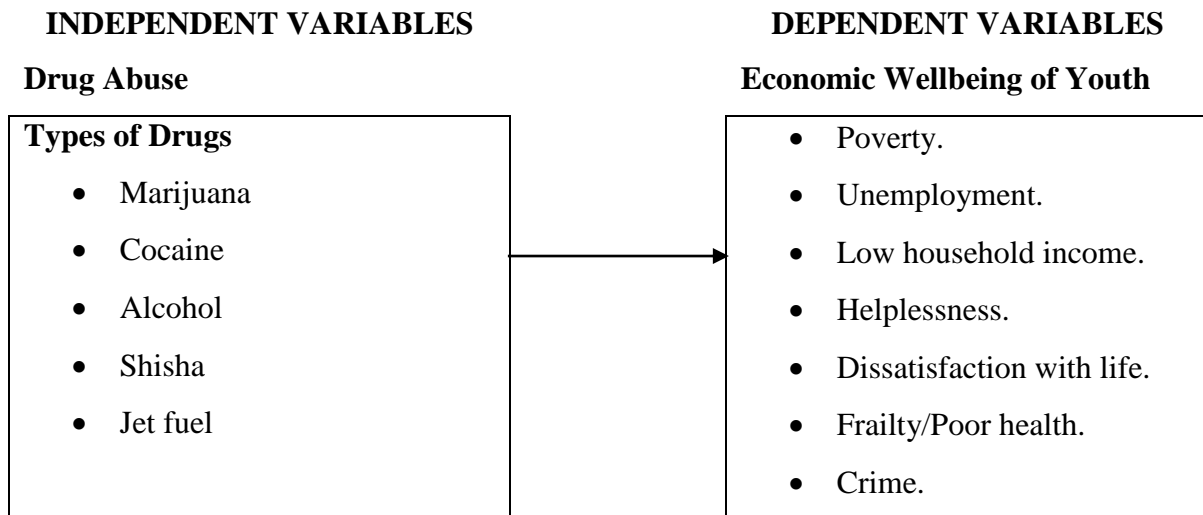
### **1.6.2. Content Scope**

This research study focused on youths, how they are increasingly becoming addicted to drugs and how this is affecting their economic wellbeing hence coming up with possible strategies for improvement.

### 1.6.3. Time scope

The study was to be conducted from April 2024 to August 2024. Analysing drug abuse among youths for a period of 5 years i.e. 2019-2023.

### 1.7. Conceptual Framework



### 1.9. Significance of the Study

This study aims at assessing the effects of illicit drug abuse amongst the youth, bearing in mind that effects of drug abuse can be fatal.

The findings were helpful to the government to improve on existing laws on substance/ drug abuse.

The findings made the Ministry of Health ensure that all districts, not only Kapchorwa Municipality has put in place substance abuse control team that would be responsible for all drug abuse cases, thus managing the situation better.

Findings of this study were beneficial to development practitioners to come-up with better ways of managing youths and laying strategies for them to be productive for the growth and development of the country.

Furthermore, the study was basis for reference for future researchers and other scholars who may need to deal with related topic.

The proposed study was useful in providing information associated with drug abuse and youth's welfare. This is meant to improve on the strategies to help the community deal with drug abuse and all its associated vices.

## **CHAPTER TWO**

### **LITERATURE REVIEW**

#### **2.0 Introduction**

This chapter contains a review of relevant information from other researchers in relation to drug abuse and economic development. It is arranged according to the study objectives. These entail the extent of drug abuse among youths, the impact of drugs abuse and measures that can be taken to address the problem of drug abuse.

#### **2.1.0. Theoretical framework**

##### **2.1.1. Sociological theory**

In sociology, the concepts of drug abuse asserted by Becker & Lemert (2000) as deviance, such as drug and alcohol use and abuse, could best be understood as a type of "career," or a set of behaviors, roles, and identities that comprise a lifestyle, running counter to conventional society in some ways and consistent in others. In short, deviance, like drug use, was best understood as a phenomenon that changed over time, with a beginning or entry point and often a desistance or end point. The "middle" period featured enmeshment in deviance, with the adoption of drug-related roles and identities. Their concept of "career" embodies this notion of deviance as a lifestyle, with fluctuations over time. From sociological theory, norms, Values, and Roles can influence whether, when, where and how drugs may be consumed (Heath, 2000), with important implications on levels of drug abuse related harm. Moreover, these cultural differences in norms regarding drugs can also influence what are considered to be the associated problems, how such problems arise, and how seriously they are taken (Schmidt and Room, 1999).

##### **2.1.1. Barbiturates**

Among other forms Miller and Draper (2001) cited barbiturates which are a class of drugs known as hypnotic sedatives which work by depressing the central nervous system and slowing down bodily functions such as heart-rate, blood pressure, and breathing. Barbiturates generate a variety of effects that run the gamut from minor sedation to complete anesthesia. There exist several different kinds of Barbiturates, including short- acting, long-acting, and fast-starting. In the past they have been prescribed to treat conditions such as Anxiety Disorder or Insomnia, and are sometimes used as analgesics, or pain medications. However, their major side effects include drowsiness, altered level of consciousness, Unresponsiveness, coma and shallow breathing among others.

### **2.1.2. Benzodiazepines**

Benzodiazepines are reported to be a class of drugs known as hypnotic sedatives or minor tranquilizers. They work by depressing the central nervous system and slowing down bodily functions such as heart-rate, blood pressure, and breathing. Neurologically they act on what are called GABA receptors in the brain, which is an area of neuron-functioning associated with the pleasure center. There are a number of different Benzodiazepines available today: Alprazolam - Xanax, Chlordiazepoxide - Librium, Clonazepam - Klonopin, diazepam - Valium, Lorazepam - Ativan, Triazolam - Halcyon. Benzodiazepines has symptoms like staggering, constipation, drowsiness, compromised coordination which occur gradually as the person is taking them continually. (<http://www.arctreatment.com/drug-rehab-los-angeles/types-of-drug-abuse/>).

### **2.1.3. Club drugs**

Fatoye et al (2002) cited that Club drugs have a variety of compounds that tends to be abused by adolescents, teen-agers, and young adults. These drugs span a fairly broad spectrum of substances that include both Stimulants and Depressants. Over the past decade they have become popular with people who go to raves, bars, concerts, and nightclubs. Since some drugs are relatively new to the market, researches regarding long- term effects are incomplete. Current data and statistics, however, indicate that this class of substances is most frequently abused by those within a specific youth culture, and as such poses certain clinical considerations with regards to treatment protocols that might be different from therapeutic approaches targeting an adult population of abusers. (<http://www.arctreatment.com/drug-rehab-los-angeles/types-of-drug-abuse/>).

### **2.1.4. Cocaine**

Cocaine is a highly addictive, highly powerful stimulant that is derived from the Coco plant and typically comes in a powdered form. According to Poulin & Elliott (1997) the powder can be snorted, injected, or cooked down into a compound that can be smoked called free-base or crack. With the exception of Methamphetamine, Cocaine is presently the single most abused stimulant in the country and is frequently used with depressants such as alcohol, Benzodiazepines and Heroin. In the 1970s the drug enjoyed a renaissance in popularity and was touted by experts as being non-addictive because it doesn't have the physical symptoms of withdrawal one sees with Heroin or liquor or sedatives. After the explosion of crack in the

mid 1980's, however, opinion changed and it is now accepted that Cocaine's has powerfully addicting psychological properties.

### **2.1.5. Hallucinogens**

Hallucinogens refer to a class of substances that fall into 3 distinct categories. These include what are known as Delirants, Psychedelics, and Dissociative. Although there is overlap between the effects and symptoms of intoxication, drugs in each category tend to generate different experiences. Historically, the use of Hallucinogens goes back thousands of years. In different cultures they have been utilized for a variety of reasons, typically for religious ceremonies (for example Native Americans have taken Mescaline for centuries to induce spiritual experiences). In general, unlike the effects produced by opiates or stimulants, which are used for purely recreational reasons, the psychedelic experience is commonly associated with altered states of being or consciousness, with trance-like states, and with dreaming and meditation (Fatoye, et al., 2002).

Narcotics -Medically it refers to a class of substances that induced sleep or have analgesic, pain-killing properties. Today it is most commonly associated with drugs that fall into the classification of Opiates, such as Morphine, Heroin, and their analogs like Hydrocodone (Vicodin). However, since the legal definition of Narcotics differs from the medical definition, there are actually two different classifications that consequently cover a broad range of psycho-active compounds and drugs. The first drug to truly be labeled as a Narcotic was liquor, whose recorded use goes back to ancient times.

### **2.2. Extent of drug abuse among the youths**

Information on the prevalence of drug use in other countries is not as comprehensive; Australia, New Zealand, Canada and Great Britain all have fairly regular household surveys or questions on drug use in other surveys and less frequent studies have assessed substance use in other countries (World Health Organization, 2001).

After caffeine, alcohol was the most widely and regularly consumed psychoactive substance in the world. However, levels of use varied substantially across cultures with European regions having the highest, followed by the Americans and the western pacific region (predominantly Australia and New Zealand), (New Zealand Health Information Service, 2001).

In most western nations, the majority of individuals consumed alcohol at some time of their lives. In the United States, New Zealand., and Australia, more than 80% of individuals surveyed reported lifetime alcohol use (Miller and Draper, 2001; Drug Abuse and Mental Health Service Administration, 2001). The prevalence of tobacco use, however, does vary dramatically across cultures: from more than 60% of men in the Russian Federation, Latvia and the republic of Bahrain (Ramstrom, 1997).

MacCoun and Reuter (2001) in their recent book *Drug War Heresies* provide an excellent taxonomy of drug-related harm, and we draw on their framework in the following discussion, four categories of harm are delineated by MacCoun and Reuter; health; social and economic functioning; safety and public order; and criminal justice and domestic violence. Many of the costs of drug use, for instance, are health related and are primarily born by the user of the drugs. Long term heavy alcohol consumption increases the risks of stroke, liver cirrhosis, alcohol dependence and cancer (Anderson, 1995). Indeed, the World Health Organization (2001) estimated that in 1990, more than 750,000 deaths could be attributed to drug and drug abuse worldwide, leading to almost 20 million years of life lost.

Miller & Draper (2001) asserts that drugs of abuse fall into one of three categories: Stimulants, Narcotics, and Sedatives. The federal government tightly regulates the prescribing criteria for each class of medication, whether it is an analgesic pain-killer or a Stimulant. Drugs are rated according to their Abuse Potential, which refers to the intensity of the euphoria the drug induces, its onset, as well as its potential to generate tolerance and dependence. Miller & Draper reports that more than 80% of individuals surveyed reported lifetime alcohol use. The prevalence of tobacco use, however, does vary dramatically across cultures: from more than 60% of men in the Russian Federation, Latvia and the republic of Bahrain.

### **2.3. Economic development of youths**

According to Youth Voices Count (2011), a new thinking about development has emerged which revolves around realization of human rights as a surest means of achieving national and human development. The National Objective and Directive Principle of State Policy number XIV, as stated in the Constitution of the Republic of Uganda 1995, calls upon the state to fulfill the fundamental rights of all Ugandans to social justice and economic development. Uganda has pursued the poverty Eradication agenda through the implementation of the Poverty Eradication Action Plan (PEAP). The PEAP is/has been

Uganda's national progressive policy development framework and medium-term planning tool. It is also the Poverty Reduction Strategy (PRS), guiding the formulation of Government policy and the implementation of programs through sector wide approaches and a decentralized system of governance.

Jean A. Christopher et al (2006), Uganda has the world's youngest population and one of the highest youth unemployment rates in Sub-Saharan Africa: around 18 percent of youth possibilities and new risks that undermine the traditional social support that helps the Youth prepare for, negotiate and explore the opportunities and demands of their passage to adulthood. Given this situation, investment in Youth is not only a social obligation but also rewarding in economic sense. This is because the Youth are the country's most valuable asset, are an integral component of the development process and they provide for and safeguard the future of the nation.

MGLSD (2001) reported that prior to the launch of Universal Primary Education (UPE), the Primary Education system suffered from low enrolment and completion rates; and lack of relevance in the whole Education Curriculum in meeting the real life aspirations, demands and society needs. The rural female and disadvantaged youth tended to benefit less from the system. The report by MGLSD (2001) acknowledges that even the affirmative action of 1.5 points to female students on entry to Makerere University has not adequately addressed the imbalance. Overall two thirds of the youth 67.8 are literate. Like in the general population, male youth are more literate than female youth at 76.7% and 59.9% respectively MGLSD (2001).

It is reported that 63% of the in-mates are youth. This locks out a large number of otherwise productive age group that could contribute positively to national development. Male youth feature more prominently in crime figures than the female counterparts. The underlying factors in all these crimes are: Internal conflicts; Unemployment; Drug abuse, Lack of guidance and counseling; redundancy and poverty. Due to erosion in our culture and social support system, the country now witnesses a lot of cases of delinquencies, street youth, sex workers, drug addicts, orphans and other disadvantaged youth who are left to cater for themselves and sometimes their younger ones (MGLSD, 2001). Youth involvement in environmental degradation in their efforts to earn a living through uncontrollable charcoal burning, brick making, wetland destruction etc. has had a negative effect on sustainable environment management (MGLSD, 2001). ages 15-24, and 16 percent of youth ages 18-30.

Youth are disproportionately affected by high under-employment, making up over 80 percent of the total unemployed (72 percent in urban and 83 percent in rural areas). Unemployment is high even among youth with tertiary education, with 36 percent of university graduates unemployed. The youth unemployment rate is now estimated at 32.2 percent in Kampala (Jean, A.C, et al] (2006) & Lukwiya (2000). Among gender differences, the unemployment rate for females (ages 18-24) was recorded at 27 percent compared to 9 percent for males in the same age group in 2009.

The Government of Uganda (GOU), acknowledges that half of economically-active youth are not engaging in income generating activities (paid or self-employment) this leads some of them to drug abuse due to redundancy Lukwiya, (2000).

Jean A. Christopher et al (2006) asserts that by any measure, employment and earnings among youth are abysmally low. A third of the youth in the sample study had not found a single day of work in the past four weeks. Some of these youth are in school, of course, and so may have little intention or opportunity to work. Even so, just 83 percent of youth out of school found any work in the past 4 weeks, and only 47 percent had worked in the seven days prior to being interviewed according to Jean, et al! (2006) & Lukwiya (2000). When work is found, remuneration is typically very low. Median daily cash earnings are Ushs. 1,000. Even this figure overstates the income earned, since it represents gross earnings income ignoring expenses incurred in its generation. Lukwiya (2000) asserts that nearly half of those earning more than Ushs. 5000 per day of work did so by producing bricks or charcoal activities which require a fair amount of cash for inputs. Thus take-home pay is even poorer than this terribly small amount. Unfortunately, we do not have a more reliable estimate of take-home pay as net income was not measured by the survey.

According to the Ministry of Gender Labour and Socio Development (MGLSD, 2001), the lives of millions of Ugandan Youth are marred by poverty, inadequate education and skills, inadequate work/employment opportunities, exploitation, diseases, civil unrest, drug abuse and gender discrimination. The environment they live in brings both new

The combined forces of poverty, social stress, marginalization, discrimination, and prejudice result, it is argued, in a sense of powerlessness and helplessness that can be temporarily relieved through the ingestion of psychoactive drugs (Singer, 2001).

Genetic factors Substance use disorders appear to run in families. For example, studies have found that sons of alcohol-dependent fathers were four times more likely than sons of non-

alcohol-dependent fathers to develop alcohol dependence, even when they had been adopted out at birth (Hesselbrock and Epstein, 1999).

Social norms can also influence the consumption of other psychoactive substances in important ways. For example, whereas the use of cannabis is essentially normative for adolescents and young adults in many Western Societies (Perker et al, 1998), it is still viewed as unacceptable among most demographic groups.

Beliefs, Expectations, and Concepts. It appears, as Mandelbaun (1965) has summarized, the behavioral consequences of drug use and abuse depend as much on a people's idea of what alcohol does to a person as they do on the psychological processes that take place. These profound cross-cultural differences in the behavioral consequences of drug abuse led Mac Andrew and Edgerton (1969) to conclude that drunken comportment was essentially the product of culturally shared beliefs about the effects of drugs on behavior, rather than the consequence of drugs per se.

Psychologists, for example, have explored in details the link between drug expectations and subsequent behavior. This body of research clearly supports the idea that an individual's belief about the effects of drugs can shape their subsequent responses in ways that can predict subsequent patterns of use (Kirsh, 1997; Fillmore, 1999).

Beliefs and expectations can not only influence whether individuals take psychoactive substances and the way that those drugs are taken, but can also affect the nature of drug-related problems such as addiction. As Peele (1987, 1989) has argued, the beliefs that individuals with drug problems have no control over their drug taking behavior are likely to foster such uncontrolled patterns of use.

For illegal drugs, the primary source of some kinds of harm arises because of drugs illicit status. The costs include the expenses relating to enforcement, which are born by society; costs to users in terms of criminal records, jail sentences, and loss of civil liberties; and harm to neighborhoods stemming from the systematic violence associated with drug dealing (MacCoun and Reuter, 2001).

According to (Hallinan & Teixeira 2007) explained that while drugs might make one feel better in the short-term, attempts to self-medicate ultimately backfired. Instead of treating the underlying problem, drug used simply masked the symptoms.(Gilmore, Hawkins, Day and Catalano (2008) noted that once the youths were freed from drugs, problems of low self-

esteem, anxiety, loneliness, or an unhappy family life, many continued to linger. Furthermore, prolonged drug use eventually brought its own host of problems, including major disruptions to normal, daily functioning. Unfortunately, the psychological, physical, and social consequences of drug abuse and addiction became worse than the original problem one was trying to cope with or avoid.

MOH, (2005) stated that drug abuse increased the chances of school drop outs. Some having been expelled from school, sought counseling, treatment and rehabilitation for problems related to alcohol and drug abuse. Drug abuse was the leading cause of school drop outs, 80% of all the clients at National care centre were school dropouts between 18- 23 years of age. The Ministry asserts that, drug abuse could affect nearly every organ in the body. A number of diseases were wholly attributed to alcohol. Those ranged from alcohol dependency syndrome to alcoholic cardiomyopathy, alcoholic gastritis, alcoholic liver cirrhosis and alcohol poisoning. Alcohol had a contributory role to the following diseases and harm full effects; cancer, cardiovascular diseases and strokes, liver cirrhosis and birth defects and fetal alcohol syndrome related to drinking during pregnancy. Other consequences included; increased risk of injury from road traffic accidents, falls, fires and injuries from interpersonal violence.

Brook & Tina (2006) noted that sometimes the youths wanted to feel good physically and emotionally. Sometimes drugs were the substitution for a healthy life experience. Drug numbed the pain and for the moment they did not feel as poor. Sometimes people needed some help coping with life. Everyday life became a struggle and simple things became too much to handle. Drugs were used to deal with it. In the case of addiction, they were not talking about the use of medication, under the care and observation of a doctor (Kandel, 2005).

MOH, (2005) noted that there had been a proliferation in the use of drugs especially in Uganda; the youth had become more involved in drugs partly because of the circumstances they were in and also due to factors beyond their control, including poverty, unemployment and domestic violence. Drug abuse played a functional role among street and slum children to escape and reduce stress, daily problems as well as served as a cure for their health maladies.

#### **2.4. The Impact of Drug abuse on socio-economic development of youths.**

The costs associated with drug abuse are related to safety and public order, and illicit drugs are implicated in traffic accidents, occupational injuries, domestic violence and homicide (Kandel (2005), Fatoye and Marakinyo (2002)) continues so urge that there are also substantial socio-economic, and criminal justice costs associated with the abuse of drugs, which are born by users, intimates, employers, neighborhoods, and society. For example, by combining the different costs associated with production losses, excess unemployment, reduced work efficiency, absenteeism, and premature death, and incarceration, health care and criminal expenditure.

Many of the costs associated with illicit substances like cocaine, cannabis, and heroin are also health-related. For example, the negative health consequences of chronic heavy cocaine use are well recognized (Chen, Scheier and Kandel, 1996), and in the United States, the use of cocaine in the year 2000 was associated with approximately 5000 deaths and 175,000 emergency room visits (Drug abuse and Mental Health Services Administration, 2000).

Father was an alcoholic, children had a predisposition to abusing that drug. Drug abuse caused one generation to pass it on to the next.

Gfoerer & De La Rosa (2009), said that apart from the inherited factors, some people had a personality that was more likely to become drug dependent. People were curious, so that alone could lead a person to try a drug. We were looking to relax and had pleasure. We all wanted to feel good, and we were by nature impatient. According to (Gfoerer & De La Rosa 2009) drugs gave an instant gratification that other things did not, so for that moment or hour or whatever timeframe, they felt good. (Kandel 2008) said that even some common personality characteristics, such as aggression, might be a factor. Children who did not have confidence, healthy self-esteem might be prone to turning to drugs to fill the void. Drug abuse caused negative changes in personality that could lead to an even more destructive behavior (Kandel, 2008).

Fatoye & Makakinyo (2002) stated that they were all wired to have relationships, and sometimes those relationships caused them to give in to something they otherwise would avoid in order to maintain the relationship. Peer pressure was huge and nowhere was this greater than during their teenaged years. Kids wanted to be cool. It began as a social action, to take the drugs to be a part of the group, to be accepted. It was not just teenagers, as peer pressure took so many different forms. WHO, (2004) further explained that there was social

etiquette, for example, to take a drink during a party. Some people actually believed that drug abuse caused them to be accepted and part of the 'popular' group.

Odianose, (2009) revealed that if those youths wanted to get drugs, they did not have to look far because they were everywhere. High school students could tell you that. Drug abuse caused people to sell drugs to the most vulnerable population, children. Odianose, (2009) further explained that it was not just the stereotypical poor sections of the inner city that served as the hotbed for drugs. Drugs were found in suburban shopping malls, rural schools, and well-to-do private school, on the job in factories, offices and remote job sites.

**Socialization and Social Identity** .The influence of social learning on the use of alcohol and other drugs has also been the subject of a number of studies. Experimental research has demonstrated that individuals can be "taught" to respond to alcohol in different ways (Zack and Roel-Sprott, 1997), and the use of alcohol and other drugs by parents has been shown to predict substance use by their children.

**The Minority Experience: Marginalization, Poverty, Prejudice, and Social Change.** One prominent theoretical model that can be employed to account for these findings is based on the idea that substance use is one way of coping with stress (e.g., Greeley and Oei, 1999). The experience of living in impoverished environments with high levels of crime and unemployment, contributes to greater levels of idleness, which can be temporarily relieved by the use of psychoactive drugs.

The idea that exposure to a wide range of stressful life experiences is an important component of substance-related problems has been characterized as one feature of "oppression illness" (Singer, 2001).

**Social Structural Factors.** Ongoing marginalization, oppression, and discrimination, high levels of unemployment, ill health, and other such factors leading to changes in the living patterns of people contribute to continuing high levels of substance use and abuse (Kahn et al, 1990).

Fischer, (2002), revealed that drug abuse caused the pathways inside the brain to be altered. Physical changes in the nerve cells were brought on by the drug. Those cells (neurons) communicated with each other releasing neurotransmitters into the gaps or synapses between the nerve cells. This made some drugs more addictive than others.

Clark, (2009), noted that there were several other factors that contributed to drug abuse like Genetic/Inherited. We were all a product of our parents. If your parents had addiction struggles, chances were that you were more susceptible to addiction. That was why drug abuse was more common in some families than in others. (Clark 2009) further explained that if parents smoked, chances were good children would smoke. If parents used alcohol, children probably followed and used that drug in much the same way.

## **2.5. Measures that can be taken to control drug abuse**

According to Teixeira (2007) control policies should be implemented by the public authorities. That is, Interventions by governments to reduce the availability of illicit drugs and to guarantee from a health and social point of view - a safest possible production and distribution system. Teixeira continues to urge that training of professionals, education of consumers, parents, youth etc and campaigns to raise awareness, challenge and motivate the public and to create an understanding of the need for control policies.

Muturi (2011) argues that "Building an integrated societal alcohol policy requires both horizontal integration, of the various departments within a level of government, and vertical integration, of the functions of the various geographic levels of government. Well-designed alcohol education is an appropriate part of the school curriculum, but is unlikely by itself to do much to reduce rates of alcohol problems in a society.

Fatoye F. O & Marakinyo (2002) Likewise, a low-intensity public information and persuasion campaign may have the symbolic value of appearing to do something about alcohol problems, but will usually have little practical effect on them. Provision of specialized treatment is a worthy and humane initiative in a modern society, but its primary justification is in terms of the help given to drinkers and their families. In and of itself, it is unlikely to lead to a reduction in a society's rates of alcohol problems. Brief interventions, however, have shown to be cost-effective and lead to public health gains, although they have not been broadly disseminated or utilized in developing societies.

## **2.6. Gaps identified in the existing literature.**

The relationship between drug abuse and the economic wellbeing of youths in Kapchorwa is a critical area of study. Here are some gaps identified in the existing literature:

**Localized Data:** Most studies focus on broader regions or countries, such as Kenya or Scotland<sup>12</sup>. There is a lack of specific data on Kapchorwa, making it difficult to understand the unique challenges faced by youths in this area.

**Economic Impact:** While there is evidence linking drug abuse to economic indicators like poverty and unemployment<sup>1</sup>, detailed analyses on how drug abuse specifically affects the economic wellbeing of youths in Kapchorwa are scarce.

**Mental Health Correlation:** Existing literature often highlights the association between drug abuse and mental health disorders<sup>1</sup>. However, there is limited research on how these mental health issues further impacts the economic stability of youths in Kapchorwa.

**Intervention Strategies:** There is a need for more research on effective intervention and recovery programs tailored to the specific needs of youths in Kapchorwa<sup>2</sup>. Most studies focus on general strategies without considering local socio-economic and cultural factors.

**Socioeconomic Determinants:** The role of socioeconomic determinants in drug abuse among youths is well-documented<sup>2</sup>, but there is a gap in understanding how these factors interplay in the context of Kapchorwa.

Addressing these gaps could provide a more comprehensive understanding of the issue and help in developing targeted interventions to improve the economic wellbeing of youths in Kapchorwa.

## **CHAPTER THREE**

### **METHODOLOGY**

#### **3.1. Introduction**

This chapter contains the research design, study population, sample size and selection. It also describes the methods that will be used in data collection; processing and analysis. The problems that were encountered by the researcher are also looked at in this chapter.

#### **3.2. Research Design**

The study was descriptive and analytical in nature. It was employed qualitative and quantitative methods of data collection. The qualitative methods was emphasized in order to reveal real and practical experiences necessary in providing a more profound understanding and analysis of all related aspects. It aimed at covering the relationship between drug abuse and the socio-economic development of youths in Central Division, Kapchorwa Municipality. The research was conducted at a single time in point through focus group discussions using the qualitative method. Weber (1996) supports this technique since it extends far beyond simple word frequency counts.

#### **3.3. Area of the study**

The study was conducted in Central Division, Kapchorwa Municipality, in Eastern Uganda. Kapchorwa district is located between coordinates 1° 24'00" N and 34° 27'00" E in Eastern Uganda. The district is bordered by Kween district to the North-East and East and Bulambuli district to the West and North-West. Kapchorwa Municipality on the other hand is made up of 3 divisions of Eastern Division, Western Division and Central Division where the District Headquarters is located and the central focus of this study.

Central Division is composed of six (06) wards; Barawa Ward, Chemonges Ward, Chepsikuroi Ward, Kapsinda Ward, Kawowo Ward and Kokwomurya Ward.

#### **3.4. Study population.**

According to the report by United Nations Development Programme on Hazard, Risk and Vulnerability Profile (2016), the National Population and Housing Census (2014) came up with findings that, Central Division - Kapchorwa Municipality had about 2,973 households. 5,958 were males and 6,387 were females, thus a total population of 12,345 people. The study covered both men and women especially the youths and the elders. The elders were interviewed to know their perception about the drugs abused by the youths and commend on how the drugs have affected the youths economically. The women of the married men who

are abusing drugs were also interviewed to get their experiences and how they cope with their husbands' drug behavior and domestic violence and lastly, the local administration which included the police department was also interviewed to know of the prevalence of drug abuse among the youths and the relationship to their economic development and also to identify the strategies that can be put in place to curb the problem of drug abuse in Central Division, Kapchorwa Municipality.

### **3.5. Study sample**

#### **3.5.1. Sample size.**

Since the study population is quite big, part of it was examined so as to obtain enough information in terms of different people's perceptions on the situation and the size was to be as follows: ten (10) people already using drugs were interviewed, fourteen (14) key informants, sixteen (16) community members, ten (10) men using drugs and ten (10) women who abuse also or are wives of the men taking drugs. This derives a total of 60 respondents. This sample size was selected because, Sutton and David (2004), stated that a sample size should not be less than 30 respondents. Beyond basic description, it would be difficult for the researcher to undertake more complex statistical analysis, as most of these analyses require a minimum sample of 30 participants.

#### **3.5.2. Sampling technique.**

In Central division – Kapchorwa Municipality, there are several villages; the study was therefore used purposive sampling because the respondents especially the key informants have vast knowledge, the researcher was thus pick majority of the respondents from within the town area due to its location and size. The town has the largest population of people in the Municipality and they are located at the center of the District thus easing accessibility.

The key informants was purposively selected because they are resourceful and knowledgeable about the study topic and give the researcher a broader view of the topic of study as well as an expert point of view of the research topic. The key informants was include the Kapchorwa Central Police Station, other area police stations and the elderly who are very resourceful in giving in-depth information about the relationship between drug abuse and the economic development of youths.

### **3.6. Methods of data collection.**

Since the study was mostly descriptive, it necessitates the use of interviewing, observation and questionnaires as major data collection methods.

### **3.6.1 Interview guide.**

This method applied to the local leaders within the area and the elderly basically to solicit their views on drug abuse among the youths and its effect on their socio-economic development. According to Mugenda (1999), this instrument allows flexibility in asking questions as questions initially posed but important to the study are brought forward. The tool is also convenient to the respondents and to the researcher as it take less time in collecting needed information. It also allows the researcher time to translate in the local language especially to the elderly who may not feel conformable with using English.

### **3.6.2 Questionnaires**

Self-administered set of questions was distributed to local people and youths. The obtained information using this method was general on the subject matter. This instrument is preferred because it allows respondents adequate time, to think and probably give accurate information. It is also convenient since the respondents respond to the questions at their time of convenience. According to Fraenkel and Wallen (1994), this is the best way of getting first-hand information, which represents the right thinking of respondents without any bias.

### **3.6.3 Observation**

According to Fraenkel & Wallen (1994), this technique involves using physical eyes to see and observe specimen or phenomena under investigation. For instance the researcher observes the physical state of youth and assesses their health and living conditions.

## **3.7. Validity and reliability of data**

### **3.7.1. Validity.**

**Content Validity:** The survey or interview questions for this study were designed to comprehensively address both drug abuse and economic wellbeing of the youths.

**Construct Validity:** The tools and methods used in this study truly measured the concepts they were intended to measure. The questionnaire was used to measure economic wellbeing. It accurately reflected the financial status, employment, and other economic indicators of the participants.

**Criterion Validity:** The findings of this study were compared with existing studies and official statistics on drug abuse and economic wellbeing to ensure consistency with established knowledge. These existing statistics were obtained from the Ministry of Health,

Ministry of Education and Sports, Ministry of Finance Planning and Economic Development as well as Police archives.

**Internal Validity:** The observed effects are due to drug abuse (independent variable) and no other factors. Controlling for confounding variables, such as economic status or education level, is crucial.

**External Validity:** The generalizability of these findings to other settings or populations ensures that a diverse and representative sample of youths can help enhance external validity.

### **3.7.2. Reliability**

The consistency and stability of the data collection methods and results was ensured through:

**Test-Retest Reliability:** The same test/surveys were administered to the same group of participants at different points in time to check for consistency in responses.

**Inter-Rater Reliability:** The research involved subjective assessments, such as interviews, ensuring that different researchers or raters produce similar results.

**Internal Consistency:** The questionnaire included multiple items measuring economic wellbeing and the responses were found to be consistent with each other.

**Parallel-Forms Reliability:** Different versions of a test were used to measure the same concept and checking for consistency in results.

### **3.8. Data processing analysis**

The qualitative data was analyzed using thematic and content analyses. All interviews and group discussions were transcribed and translated. These manuscripts were then to be read and coded manually in order to identify any concepts, patterns, and themes. Relevant quotes were recorded word for word in the text, and were supplemented by real life cases described by some of the interest groups.

### **3.9. Ethical considerations.**

Before the study, the researcher seeks permission from the district authorities and community leaders before entering the community. In addition, an introductory letter from Uganda Christian University recommending the researcher to conduct his research in the area was presented to the respondents in order to capture their confidence and attention.

The respondents were informed that they are free to show up or turn down the invitation if they so wish.

At household level, permission was sought and at all levels assurances was given for privacy and confidentiality.

The purpose of the study was explained to the concerned respondents at all levels to keep them informed about the study.

## CHAPTER FOUR

### PRESENTATION, ANALYSIS AND DISCUSSION OF THE FINDINGS

#### 4.0. Introduction

The data was collected using both quantitative and qualitative methods, which was then analyzed and processed to make it useful and understandable. Data was collected, edited, coded, tabulated and then analyzed.

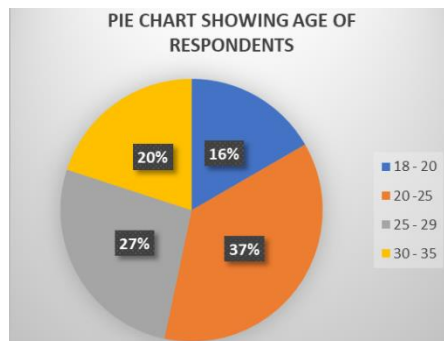
#### 4.1. Social Demographic Characteristics

##### Age of the respondents

Respondents were asked questions related to their age and the results are shown in the table below:

**Table 1:** Age distribution of respondent

AGE	No. OF RESPONDENTS	PERCENTAGE
18 - 20	10	17%
20 -25	22	37%
25 - 29	16	27%
30 - 35	12	20%



**Source:** Primary data, 2024

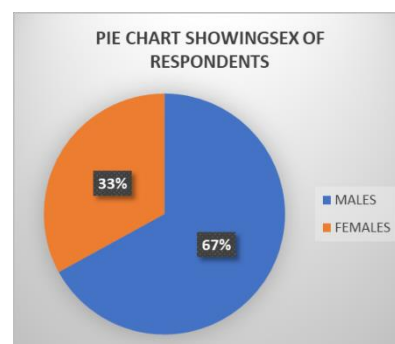
Table 1 above shows that 17% (10) of the respondents were between 18-20 years, 37% (22) were between 20-25 years of age, 26% (16) were between 25-29 years of age, and 20% (12) were between 30-35 years.

##### Marital Status of the respondents

Another variable which was important in respect to the situation of the people in the area was gender. A section of the questionnaire asked respondents to specify their sex; male or female.

**Figure 2:** sex of the respondents

SEX	NO. OF RESPONDENTS	PERCENTAGE
MALES	40	67%
FEMALES	20	33%



Source: Primary data, 2024

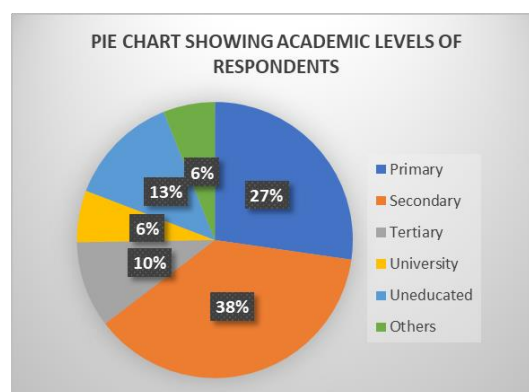
Figure 3 above showed the sex of the respondents and it was found that 33% of the respondents were females and 67% were males. This means that the majority of the respondents were males with 67% of the total percentage of the respondents as compared to 33% of the females.

### Academic levels of the respondents

Respondents were asked questions related to their educational levels and their responses are shown in the table below;

**Table 2:** Academic levels of the respondents

LEVEL	NO. OF RESPONDENTS	PERCENTAGE
Primary	16	27%
Secondary	22	37%
Tertiary	6	10%
University	4	6%
Uneducated	8	13%
Others	4	6%



Source: Primary Data, 2024

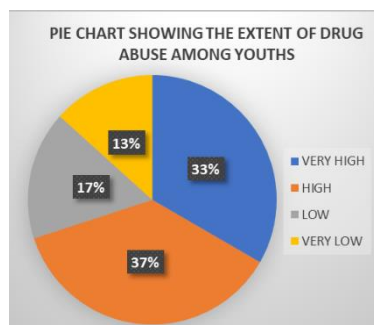
Table 4 above showed academic levels of the respondents and it revealed that 13% of the respondents were uneducated, 27% were of primary level, 37% had secondary education, 7% received university education, 10% had tertiary education and 6% fell under other levels of education. This therefore shows that the majority of the respondents were secondary (37% of the total number of respondents).

### 4.2. The extent of youth involvement in drug abuse in Central Division, Kapchorwa

**Municipality.**

**Table 3:** The extent of youth involvement in drug abuse in Central Division, Kapchorwa Municipality.

	NO. OF RESPONDENTS	PERCENTAGE
<b>VERY HIGH</b>	20	33%
<b>HIGH</b>	22	37%
<b>LOW</b>	10	17%
<b>VERY LOW</b>	8	13%



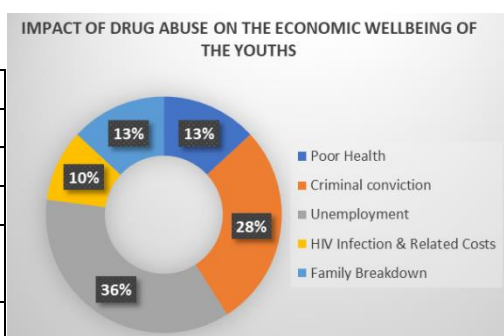
Source: Primary data, 2024

Figure 5 above showed the extent of youths' involvement in drug abuse in Central Division, Kapchorwa Municipality and the findings reveal that; 33% (20) of the respondents noted that the level of the youths' involvement in drug abuse was very high in Central Division. The respondents noted that many youths are involved in drug consumption like alcohol, marijuana and other illicit drugs. On the other hand, majority 37% (22) of the respondents noted that drug consumption among the youths of Central Division was high and not very high as said by the 33% (20) of the people. Only 17% (10) of the respondents said that level of drug consumption among the youths is low and the other 13% (8) of the respondents said that the level of drug consumption among the youths in the municipality was very low. Given the figures of the findings, majority of the 37% (22) of the respondents noted the drug consumption level among the youths was high.

**4.3. Impact of drug abuse on the socio-economic wellbeing of youths in Central Division**

**Table 4:** Impact of drug abuse on economic wellbeing of youths in Central Division, Kapchorwa Municipality.

RESPONSE	FREQUENCY	PERCENTAGE
Poor Health	8	13%
Criminal conviction	17	28%
Unemployment	22	37%
HIV Infection & Related Costs	6	10%
Family Breakdown	8	13%



Source: Primary data, 2024

Findings in Table 4 show that 13% of the respondents noted that youths are facing health

problems associated to consumption of drugs. Respondents said that the commonest addictive drugs included tobacco, alcohol, marijuana and cocaine. All of these substances have several important characteristics in common as they change the function of the human brain and have an impact on behavior. High doses of many of these drugs, are more dangerous as they could cause immediate life-threatening health problems such as heart attack, respiratory failure, cancer, Tuberculosis among others.

These findings are in line with those of Dave (2004) when he conducted research on drug abuse, its effects and prices, found that 2 - 4% of all cancer cases were related to alcohol and more especially, Upper digestive tract cancers were the most common, hitting the throat, mouth, larynx, and pharynx.

Additionally, findings further revealed that drug abuse accelerates the problem of crimes among the youths in Central Division. According to 27% of the respondent's crime and drugs are related in several ways, first, illicit production, manufacture, distribution or possession of drugs may constitute a crime. Secondly, drugs might increase the likelihood of other, non-drug crimes occurring. Thirdly, drugs may be used to make money, with subsequent money-laundering. And lastly, drugs may be closely linked to other major problems, such as the illegal use of guns, various forms of violence and terrorism. The age group with the highest frequency of drug use was often 18-35 years, although wide variations might exist in different villages.

Majority (37%) of the respondents said that drug abuse has caused unemployment among youths in Central Division. They said that first of all abusing drugs is an anti-social behavior prohibited in society. So many students caught with drugs especially in secondary schools have been given indefinite expulsion. This has led to high school dropout rates since these students cannot be accepted in other schools with such records. The problem of school dropout thus results in illiteracy and the resultant of this is widespread unemployment, which pushes many to indulge in criminal acts.

Wide spread HIV/AIDS infections together with its associated costs was also mentioned by 6% of the respondents as another effect of drug abuse among the youths of Central Division. The research found that the use of drugs had been compounded by the spread of HIV/AIDS and other sexually transmitted diseases and the youths were the most trapped. There were beliefs among some groups that the use of drugs such as cocaine provided self-cure and lowers the risk of the spread of HIV in the body. Experience and work with slum youth had shown that

significant proportions of young people abusing drugs were at a high risk of engaging in commercial sex involving multiple partners due to drug consumption.

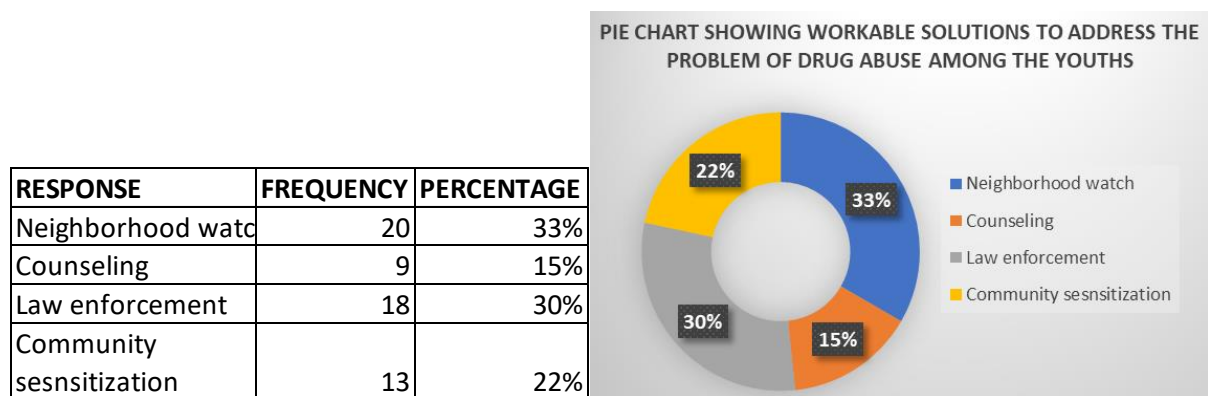
Similarly, 12% of the respondents noted that family breakdown is yet another effect of drug abuse among the youths of Central Division. The respondents noted that drug abuse is currently linked to many harmful consequences for the individuals like family problems such as child abuse, broken homes, marital problems/ divorce. Alcohol dependents are more frequently divorced than others, spouses and children of alcohol dependent persons had relatively high rates of physical, emotional and psychosomatic illnesses.

All these result in wide spread poverty and economic deprivation since the able-bodied youth often end up sick, illiterate, unemployed, socially rejected and isolated from their families and communities or even potential employers due to conviction and bad criminal records.

#### 4.4. Possible measures to the problems of drug abuse in Central Division

The researcher also intended to come up with possible solutions to the problem of drug abuse. This was also closed related to poverty mitigation measures so that socioeconomic wellbeing of youths can be boosted. Respondents suggested a diversity of approaches included which neighborhood watch, community policing, urban or physical design, comprehensive and multi-disciplinary efforts as presented in table 4.5 below;

Tables: Solutions to the problems of drug abuse in Central Division



Source: Primary data, 2024

Results in table 4.5 indicated that 33% of the respondents said that drug abuse can be prevented through neighborhood watch as a form of community policing whereby keeping a close eye on neighbors so that selling and consumptions of drugs can be easily identified and tackled with immediate effect. This can be achieved with support from the local authorities. It will help to scare away youths from abusing drugs as they will no longer have hideouts as

everyone will be keeping an eye against each other.

Another 22% of the respondents said that, community sensitization can be helpful to tackle the problem of drug abuse. They said that this is another mechanism to reduce consumption of drugs like marijuana, cocaine and fuel sniffing in the subcounty. The study findings established that if people are sensitized on drug abuse and its associated effects, and also sensitize them on how to be creative, they will eventually get involved in productive ventures which does not require a lot of capital like brick laying and farming, hence they will start earning from these projects and eventually lead to socio-economic growth.

In the same way, 30% of the respondents said that implementation of strict laws on production of drugs can help to reduce crimes. It was noted that there should be community sensitization and neighborhood watch in addition to regulation of strict laws on production and consumption of drugs. This strategy may make youths to get involved in productive activities like brick laying, sports, among others. Nevertheless, police officers involved in corruption should be dealt with because at times culprits are released after giving in some money before even justice is served.

Results emphasized that counselling sessions could be conducted to the youths addicted to drug abuse. 15% of the respondents said this and suggested that can be a good strategy for tackling drug abuse can be through counselling starting from schools where majority of the youths usually adopt so such behaviors.

## CHAPTER FIVE

### SUMMARY, CONCLUSIONS AND RECOMMENDATIONS

#### 5.0. Introduction

This chapter is concerned with discussions, conclusions and recommendations. The discussions have been presented in line with the research objectives.

#### Discussion

The study was conducted to establish the extent to which drug abuse has affected socio economic development of youths in Central Division, Kapchorwa Municipality, Uganda. The research was conducted in line with the objectives which were; to determine the extent of drug abuse amongst the youths, to assess the impact of drug abuse on the socio-economic development of youths and to establish possible measures to the problems of drug abuse in Central Division, Kapchorwa Municipality.

#### 5.0.1 The extent of drug abuse amongst the youths in Central Division, Kapchorwa Municipality.

The youth involvement in drug abuse in Central Division, it was revealed that about 20 (33%) of the respondents noted that the level of the youths' involvement in drug abuse was very high. The respondents noted that many youths are involved in overtaking drugs like alcohol, marijuana and other illicit drugs while 22 (37%) said that the extent to which youths are abusing drugs was high. Given the figures of the findings, the vice of drug abuse among the youths in Central Division is growing is faster and this was attributed to factors like peer group influence, poverty, easy accessibility to these drugs and the influence of the internet whereby some youths are influenced by peers who misuse the social media for such things like *"how to become sober using marijuana"*.

In other instances, this study established that youths are usually idle (unemployed) and this provokes them to look for quicker means of getting money whereby in the processes, they use drugs with misconception that they will become strong and or sell it to others because drugs like marijuana and cocaine are expensively bought and have got high market demand despite the fact that the Uganda government prohibits farming, selling and consumption of such drugs.

### **5.0.2 How drug use affected youth socio-economically in Central Division, Kapchorwa Municipality**

About 13% of the respondents noted that health problems were associated to consumption of drugs by the youths. The broader context of addictive substances included tobacco, alcohol and solvents (including glues, thinners and gasoline).

The findings shows that 2-4% of all cancer cases were related to alcohol. Upper digestive tract cancers were the most common, hitting the esophagus, mouth, larynx, and pharynx. Women who drunk prior to menopause were more likely to develop breast cancer.

Only 27% of the respondents said that drug abuse accelerates the problem of crimes among the youths. Crime and drugs might be related in several ways, none of them simple. First, illicit production, manufacture, distribution or possession of drugs may constitute a crime. Secondly, drugs might increase the likelihood of other, non-drug crimes occurring. Thirdly, drugs may be used to make money, with subsequent money laundering. And lastly, drugs may be closely linked to other major problems, such as the illegal use of guns, various forms of violence and terrorism.

Majority (37%) of the respondents said that school dropout was the major effect of drug abuse among the youths of Central Division. The respondents noted that also said that drug abuse increased the chances of school drop outs because students failed to perform in class and many of them absent themselves from school.

The research shows that about 7% of the respondents noted that alcoholism was another effect of drug abuse among the youths. Alcoholism was a disease to which some people seem predisposed. Alcoholism put you at great risk for other health problems, and it could shorten your life by more than 10 years.

The study further established that drug abuse leads to easy spread of diseases among the youths. This is because as they engage in drug use due to causes such as peer pressure, they end-up in sexual acts without protection which in the end leads to acquisition of sexually transmitted diseases and this affects both their social and economic well-being.

### **5.0.3 Measures to curb down the effects of drug abuse among the youths.**

According to this study, it was emphasized that drug abuse can be prevented through neighborhood watch as a form of community policing whereby keeping a close eye on neighbors so that selling and consumptions of drugs can easily be identified and tackled with

immediate effect. Additionally, community sensitization could be helpful to tackle the problem. This is another mechanism to reduce consumption of drugs like marijuana, cocaine and fuel sniffing in the Central Division, Kapchorwa Municipality. If people are sensitized on drug abuse and its associated effects, and also sensitize them on how to be creative, they will eventually get involved in productive ventures which does not require a lot of capital like brick laying and farming, hence they will start earning from these projects and eventually lead to socio-economic growth. Last but not least, it was suggested that implementation of strict laws on production of drugs can help to reduce crimes and there should be community sensitization and neighborhood watch in addition to regulation of strict laws on production and consumption of drugs. Nevertheless, police officers involved in corruption should be dealt with because at times culprits are released after giving in some money before even justice is served. However, counselling sessions could be conducted to the youths addicted to drug abuse through education, treatment, and self-help support projects.

### **Conclusions**

Drug abuse was a major cause for concern and has a negative effect on society at large. Though youths constituted a large segment of drug abusers, adults also are involved. The level of consumption or abuse of drugs was discovered to be growing at a high rate in Central Division, Kapchorwa Municipality. This has resulted into an increase in the spread of diseases, health illnesses like cancer which was not even heard of many decades back. There is also an increase in family breakdown due to abuse of drugs and all these are implications of socio-economic challenges youths are continuing to face. It seemed possible that many addicts would function normally if given a steady supply of good-quality drugs. The real harm to users was that they presently tended to become social dropouts, in that the illegal status of the drug causes them to spend all their time obtaining and using it. This study established that there seemed to be little doubt that, if it were not for the fear of crime and the spread of drugs within the sub county, most people would not be seriously worried and concerned about drugs addiction. Within the last five years there had been a substantial increase in the use of illegal drugs, particularly among the youths and high school students and the prevalent drugs of abuse for this group were marijuana, alcohol and cocaine. The economic challenges youths face included productivity loss as many youths are unemployed but cannot even use opportunities around them like farming, cattle rearing and or brick-laying, they increase opt for drug abuse and betting with hope that they will get quick money. Additionally, the healthy implications of drug abuse included easy spread of diseases which makes youths weak and

unproductive yet healthcare costs are very high. In a similar manner, the criminal costs are increasing because many have been jailed for committing crimes like adultery, theft, rape among others.

### **Recommendations**

The researcher came out with the following recommendations;

#### **Government**

The government should stop drug trafficking and penalize drug traffickers so as to limit the level of drugs entering the country. In addition, anybody caught in farming, distribution and selling of illegal drugs should be dealt with without mercy.

Furthermore, the researcher recommends that the government should construct rehabilitation centers so that the youths helped in terms of counselling especially to those who are already addicted to drugs.

#### **Ministry of Health**

The Ministry of Health also ought to join the fight of drug abuse in the municipality so that the youths can be redeemed from the vice. This can be done through sensitization campaigns by facilitation of social workers and other development practitioners.

There should be sensitization programmes designed to help the youths cope up with life in Central Division. The programmes should be designed to help both the parents and other stakeholders portray the effects of drug abuse in the municipality.

#### **Central Division, Kapchorwa Municipality**

The researcher also recommended that the municipal council should implement self-help projects geared towards creation of jobs for the youths at subcounty level so that the youth can get involved in development activities.

#### **Local community**

The community through local council authorities need to introduce neighborhood watch as a form of community policing whereby keeping a close eye on neighbors who sell or farm illegal drugs.

## References

2. Anderson (1995) the Comparability of Male Violent Substance, Abusers in Violence or Drug abuse Treatment. *Journal of Family Violence*, 14, 297- 3 14.
3. *Assoc. J*; 156 (10):1387-1393
4. Dave, Dhaval (2004). "Illicit Drug Use among Arrestees and Drug Prices." National Bureau of Economic Research Working Paper 10648.
5. Dobkin De Rios (1990). The Determinants of Illegal Drug Use." *Contemporary Policy Issues*, 1991, 4 (Issue missing), pp. 93-105.
6. Fatoye FO and O Marakinyo (2002) Substance use amongst secondary school students in rural and urban communities in southwestern Nigeria. *EAMJ* 79(6):299-305.
7. Fraeknel, J.R and Wallen, N.E (1994), *How to Design and Evaluate Research in Education*; New Galaxies Lithographic Arts and Printing Press; Manilla Philippine.
8. *Health Economics*, 1<sup>st</sup> Edition (3), pp. 229-245.
9. <http://www.arctreatment.com/drug-rehab-los-angeles/types-of-drug-abuse/>
10. Kessler, Jabston. Et al (1984) "Drug use, Drug Abuse, and Labor Market Outcomes."
11. Kirsh (1997) and Fillmore (1999), Economic Situation and the implication of Drug Abuse in Western Europe.
12. Kiruhura District baseline survey report (2009) unpublished.
13. Lukwiya M (2000) Cigarette smoking among secondary school students in Jinja District. Proceedings of the 9<sup>th</sup> UNACOH Annual Scientific Conference, Kampala.
14. MacCoun Reuter (2001), Drug war: Four categories of harm as a result of substance abuse. McGraw Hill, Irwin New York City.
15. Mandelbaum (1965) Behavioral Consequences of Drug use and abuse in the states.
16. Miller .G. and Draper S., (2001), Drug abuse and Mental Health Service Administration. Forms and their effects on socio economic development. In: Glick, R., and Moore, J., Eds.
17. Mugenda, O.M (1999), *Research Methods. Quantitative Approaches*; Acts Press, Nairobi Kenya.
18. New Zealand: Health Information Service (2001): Violent Substance Abusers m Domestic Violence Treatment. *Violence and Victims*, 14,179-190.
19. Perker J. et al (1995). Alcohol Abuse, Wife Assault, and Power Needs. *Social Service Review*, 274-284
20. Poulin C and D Elliott (1997) Alcohol, tobacco and cannabis use among Nova Scotia adolescents: implications for prevention and harm reduction. *Can. Med.*
21. Schmidt & Room (1999), Economists and Drug Policy." *Carnegie-Rochester*

- Conference Series on Public Policy*, 1999, 36 (issue missing), pp. 223-48.
22. Sickles, Robin, and Taubman, Paul (1991). "Who Uses Illegal Drugs?" *The American Economic Review*, 81 (2), pp. 248-251.
23. Sniger R. Browedley (2001), *The social economic implication of drug abuse in Africa, the underdeveloped countries*, 1<sup>st</sup> Edition, Macmillan publishers.
24. Soueïlf Andererel Pere! (1990), "Illicit Drug use and Educational Attainment." *Health Economics 3<sup>rd</sup> Edition* (45), pp. 489-511.
25. The Daily Monitor, 3<sup>rd</sup> July 2013: Drug abuse must be dealt with now, Monitor Publications (online news).
26. World Health Organization (WHO, 2004), *World status Report on Alcohol Consumption. Review of the State of Sub-Saharan Africa*.

**APPENDIX I: QUESTIONNAIRE**  
**UGANDA CHRISTIAN UNIVERSITY**  
**MBALE UNIVERSITY COLLEGE**

**Dear respondent,**

I am **AMIS MONGUSHO TITUS**, student of Uganda Christian University pursuing a bachelor's degree in Social Work and Social Administration. I am carrying out Research on the **“Drug abuse on the economic development of youths; a Case Study of Central Division, Kapchorwa Municipality”**. You are therefore kindly requested to respond to this questionnaire in order to assist me achieve the objectives of this research. Please honestly answer the following questions as your response will be very confidential and it will be for only academic purposes.

Thank you very much for your cooperation.

**PART A: BIO DATA**

Please tick or circle the correct answer

**1. Age**

18 – 20 years

20 – 25 years

25 – 29 years

30 – 35 years

**2. Gender**

Male

Female

**3. Level of education**

Primary

Secondary

Tertiary

University

Uneducated

Others

Specify: \_\_\_\_\_

**PART B: FORMS OF DRUG ABUSE**

**4. Do you know any of the following drugs?**

Alcohol

Cigarettes/tobacco

Marijuana

Shisha

Cocaine

Mira

Kuber

**5. If yes, have you ever used any?**

Yes

No

**6. Do you get intoxicated when you use such drugs?**

Yes

No

7. What group of people do you think use these drugs mostly?

Youths

Adults

Adolescents

8. Which type of drug is mostly abused?

Alcohol

Cigarettes/tobacco

Marijuana

Shisha

Cocaine

Mira

Kuber

Please list any other Drugs abused that are not listed above

---

---

9. How readily available are these drugs to the people using them? Do you think that the availability of these drugs makes them use these drugs?

.....  
.....

10. How often do you think these drugs are being taken?

.....  
.....

**PART C: ECONOMIC ACTIVITIES OF YOUTHS**

11. Youths in this community are mostly engaged in:

.....  
.....

.....  
.....  
.....  
.....  
.....  
.....

12. There is an increase in people's incomes due to youth's active involvement in economic activities.

Strongly Agree     Agree     Disagree     Strongly Disagree

13. Majority of youths in this area are employed in the formal sector?

Strongly Agree     Agree     Disagree     Strongly Disagree

14. What is the level of youth's involvement in economic activities?

Low                       Medium                       High

Please give reasons for your answer

.....  
.....  
.....  
.....

15. What are the challenges faced by youths in this community?

.....  
.....  
.....  
.....  
.....  
.....  
.....

16. Is there a relationship between the challenges listed abuse and drug abuse among the youths?

Yes                       No

If yes, please explain how, if no, give reasons.

.....

.....  
.....  
.....

**PART D: EFFECT OF DRUG ABUSE ON ECONOMIC WELLBEING OF YOUTHS**

17. What special economic difficulties confront youths' economic development?

.....  
.....  
.....  
.....

18. How does drug abused affect youths economic activities.

.....  
.....  
.....  
.....

19. What legal options are available to prevent drug abuse among youths?

.....  
.....  
.....  
.....

20. How does the court decide who gets guilty of abusing drugs?

.....  
.....  
.....  
.....

21. What in your opinion do you think should be done to help eliminate the problem of drug abuse and among the youths?

.....  
.....  
.....

Thank you for your participation.

END

**APPENDIX II: INTERVIEW GUIDE WITH THE KEY INFORMANTS (LOCAL AUTHORITIES).**

**UGANDA CHRISTIAN UNIVERSITY  
MBALE UNIVERSITY COLLEGE**

1. For how long have you been in this service? What type of clients have you been working with in terms of the problems that you receive? Would you tell me if the problems are associated with drug abuse?
2. Who are your clients in terms of age? Do you also have some in terms of sex, which group is mostly affected?
3. What is their level of education in terms of schooling or training? Would you tell me more who are the most affected, the educated or non-educated?
4. What drugs do they take mostly? Are there other drugs apart from those reported to you? Would you tell me more about where they get these drugs according to your knowledge?
5. What reasons do they give for their behavior of drug abuse? Are there other reasons that you have identified from your practice?
6. Is there any relationship between the drugs they take and socioeconomic development?
7. Are there other related issues of drug abuse? Would you tell me more about these issues?
8. Do you have any existing strategies that you use to curb drug abuse? How effective have these strategies been in dealing with the problem?
9. What do you think should be done to perpetrators of drug abuse?
10. What in your opinion do you think should be done to curb this problem? Would you tell me more about what would be done to make the methods identified effective in dealing with the problem?

Thank you for your participation



# UGANDA CHRISTIAN UNIVERSITY

A Centre of Excellence in the Heart of Africa  
MBALE UNIVERSITY COLLEGE.

Office of the Academic Registrar

To TOWN CLERK

Dear Sir/Madam,

Re: Academic Research

Christian greetings!

*Received & Accepted*  
TOWN CLERK  
CENTRAL DIVISION  
02 SEP 2024  
P.O. Box 35, Kampala  
URUGU MUNICIPAL COUNCIL

We are honored to introduce to you Mr. Mrs. /Miss AMIS MONGUSHD TITUS  
Of Registration Number J22/MUC/BSW1079 pursuing a Masters'  
Degree/Postgraduate Diploma / Bachelor's Degree  
Bachelors Degree

He/ she is required to carry out academic research on the topic  
DRUG ABUSE AND THE ECONOMIC WELL BEING  
OF YDVIH A CASE STUDY OF YDVIH IN CENTRAL DIVISION KAPCHORWA  
MUNICIPALITY  
and thereafter produce a well bound hard cover research report (MAROON) in color for  
undergraduate and three (BLACK) copies for Postgraduate students as a university  
requirement for the award of a degree/diploma in the academic discipline that he /  
she is pursuing.

We shall be grateful for the help you may offer to him or her accordingly.  
Thank you.

Yours faithfully,

Mr. Akampurira Timothy  
Academic Registrar

UGANDA CHRISTIAN UNIVERSITY  
02 SEP 2024  
ACADEMIC REGISTRAR  
MBALE UNIVERSITY COLLEGE

A Complete Education for a Complete Person

P.O Box, Mbale, Uganda, email: academic/registrar@mbale.ucu.ac.ug