

**AN EVALUATION RESEARCH ON THE IMPACT OF OPERATION
WEALTH CREATION ON POVERTY REDUCTION IN MBALE
DISTRICT:A CASE STUDY OF BUKIENDE SUB COUNTY**

CHRISTINE WANDAWA

S15B15/912

**A DISSERTATION SUBMITTED TO THE SCHOOL OF SOCIAL SCIENCES IN PARTIAL
FULFILLMENT OF THE AWARD OF A DEGREE OF BACHELOR OF SOCIAL WORK AND
SOCIAL ADMINISTRATION OF UGANDA CHRISTIAN UNIVERSITY**

September, 2024



**UGANDA CHRISTIAN
UNIVERSITY**

A Centre of Excellence in the Heart of Africa

DECLARATION

DECLARATION

I Wandawa Christine, hereby declare that this research dissertation is an original work developed through my personal efforts and has never been submitted for any award of Degree or Diploma in any Institution of Higher learning.

Signature:


.....

Date:

1/07/2024
.....

Wandawa Christine

APPROVAL

APPROVAL

This is to certify that this research dissertation, entitled: an evaluation research on the impact of operation wealth cream in reducing poverty in Mbale district, a case study of Bukende Sub County has been submitted to the Faculty of Social Sciences Department of Social work and Social Administration of Uganda Christian University for review with my approval.

Signature:



.....

DR. KIWANUKA ANTONY

Date:

01.07.2024.....

DEDICATION

I dedicate this research dissertation to God the almighty, my savior, provider, my source of inspiration, wisdom, knowledge and understanding. He was so good to me in whatever I do. May the glory and honor be to him. This research dissertation is further dedicated to my care givers who have done their best by supporting me financially and socially.

ACKNOWLEDGEMENT

I thank God Almighty who has enabled me to push through with this research study although it has not been an easy task.

I also acknowledge the contribution of my University supervisor Dr. Kiwanuka Anthony his continuous advice and guidance towards the achievement of this research report.

I thank the Sub county chief Mrs Nabukwasi Betty and the entire staff of Bukende Sub County for their contribution and support upon helping in accomplishing my task of carrying out my research.

Special thanks goes to my Father Wandawa John Sam (RIP) my Mother Mrs. Sarah Wandawa and my siblings Wandawa Rachel, Wandawa Mercy, Wandawa Joseph, Wandawa Josephine, my mentors Mr. Motoyi David, Mr Baligasima Yazid , I thank them all for being great mentors to me and for their support and encouragement and for being there for me despite the circumstances I went through and for the great assistance and the great work they rendered to me.

May God reward them abundantly.

ABSTRACT

The study evaluates the impact of Operation Wealth Creation (OWC) on poverty reduction in Bukiende Subcounty, Mbale District, Uganda. Prior to the introduction of OWC, 53.4% of households in Bukiende lived below the poverty line, with limited access to formal education, healthcare, and infrastructure, and a heavy reliance on subsistence agriculture. The OWC program, launched as a government initiative to empower communities economically, aimed to address these issues by promoting modern farming techniques, improving agricultural productivity, and fostering infrastructure development.

However, OWC faced several challenges, such as poor targeting of beneficiaries, insufficient monitoring and evaluation, late delivery of agricultural inputs, and issues with the quality of distributed materials. Despite these hurdles, the program made significant strides in reducing poverty in Bukiende, though further improvements in its implementation could yield even greater results.

The study concluded that poverty is one of the greatest challenges that keep Ugandans backward because Operation Wealth Creation as a program aimed at eradicating poverty in partnership with the government of Uganda. This left a positive impact on the farmers who fully utilized the resources provided by Operation Wealth Creation

The study concludes with recommendations that the government should strengthen its economic empowerment programs through carrying out effective planning and follow up at all implementation stages in order to achieve Intended goals and objectives effectively and efficiently which in turn will help to minimize poverty among Ugandans

TABLE OF CONTENTS

DECLARATION.....	i
APPROVAL.....	ii
DEDICATION.....	iii
ACKNOWLEDGEMENT.....	iv
ABSTRACT.....	v
CHAPTER ONE.....	1
1.1 Introduction.....	1
Vision:.....	1
Mission:.....	1
Goal:.....	1
Objectives:.....	1
Core Values:.....	2
ORGANISATION STRUCTURE OF BUKIENDE SUBCOUNTY.....	4
1.2 Background.....	6
1.3 PROBLEM STATEMENT.....	13
1.4 OBJECTIVES OF THE STUDY.....	13
1.5 RESEARCH QUESTIONS.....	13
1.6 GEOGRAPHICAL LOCATION.....	14
1.7 TIME SCOPE.....	14
1.8 SCOPE OF THE STUDY.....	14
1.9 Significance of the study.....	14
CHAPTER TWO.....	17
Literature review.....	17
2.0 Introduction.....	17
2.2 different activities implemented under OWC (Programme).....	17
2.3 Contributions of OWC programme towards poverty eradication.....	18
CHAPTER THREE:.....	20
METHODOLOGY.....	20
3.0 Introduction.....	20
3.1 Research Design.....	20
3.2 Area of study.....	20
3.3 Study Population.....	20
3.4 Sample Size determination.....	21
3.5 Sampling techniques.....	21
3.5.1 Purposive Sampling.....	21
3.5.2 Simple random sampling.....	21

3.6 Data Collection methods	21
3.6.1 Questionnaires.....	21
3.6.2 Interview	22
3.6.2Focus Group Discussion.....	22
3.6.2 Observation	22
3.7 Data collection instruments	22
3.71 Interview guide.....	22
3.72 Reliability.....	22
3.9 Data Analysis	23
3.91 Qualitative data collection.....	23
3.91 Quantitative data collection.....	23
3.10 Data type and sources.....	23
3.10.1 Primary Data sources	23
3.10.1 Secondary Data Sources.....	24
3.11 Ethical Consideration.....	24
CHAPTER FOUR.....	25
DATA PRESENTATION, INTERPRETATION, AND ANNALYSIS OF FINDINGS.....	25
4.1 Introduction.....	25
4.2 Demographic characteristics of the beneficiaries of Operation Wealth Creation	25
4.2.0 Marital status of Respondents	25
4.2.1 Demographic Characteristics of Respondents.....	26
4.2.2 Economic Characteristics of the respondents.....	27
4.3 Perception of Poverty from the Beneficiaries and respondents in Bukiende Sub county Mbale District.....	28
4.4 The Development and Progress of OWC in Reducing Poverty in Bukiende Sub county Mbale District.....	31
4.5 The nature of products and services provided by Operation Wealth Creation to reduce poverty in Bukiende Sub county, Mbale district	34
4.5.0 Below is a picture showing the products that were supplied by Operation Wealth creation.....	34
4.6 Challenges faced by Operation Wealth creation during the implementation of its activities and possible solutions that were put in place to address the challenges	35
4.6.0 According to General Salim Saleh as one of the fore front implementers of the OWC program, the following were the operational challenges and gaps that affected the implementation of Operation Wealth Creation	35
4.6.1 Possible solutions that were put in place to address the above challenges that were faced by Operation Wealth Creation.....	37
CHAPTER FIVE.....	39
SUMMARY OF FINDINGS, RECOMMENDATIONS AND CONCLUSIONS.....	39
5.1 Introduction.....	39

5.1.0 Introduction Community perception on poverty	39
5.1.1 The extent of operation wealth Creation in reducing poverty in Bukiende Sub county Mbale District.....	40
5.1.2 The nature of products and services provided by Operation Wealth Creation in reducing poverty in Bukiende Sub county Mbale District.	40
5.1.4 The challenges faced by Operation Wealth Creation in implementing its activities in Mbale district, Bukiende Sub county as a case study and possible solutions to the above challenges are as discussed below.....	41
5.2 Conclusions.....	41
5.3 Recommendations.....	41
REFERENCES.....	42
APPENDICES.....	43
APPENDIX I: QUESTIONNAIRE.....	43
APPENDIX II:	46
INTERVIEW GUIDE OF KEY INFORMANT	46
University Introductory letter for research.....	48
Agency acceptance letter for research.....	49

CHAPTER ONE

1.1 Introduction.

Bukiende Sub County is located in Mbale district in Eastern part of Uganda. The sub county has an elevation of 1158 meters situated north east of Bulusambu and east of Bufuuja. Bukiende is located in the Eastern part of Mbale 20 kms from Mbale town, 3 kms off Mbale Bududa road. It shares common boundaries with Busano Sub County in the North, Buwagogo, Bukibokolo, and Sibanga sub counties in the East, Lukhonje Sub County in the south and Busoba Sub County in the South East. It stretches right from Busano Sub County downward to Lukhonje new Sub County.

Bukiende Sub County has seven parishes and seventy three villages. The parishes are Bumutsopa, Isango, Bunashimolo, Burukuru , Bungwanyi, Bushangi and Bumaena Parishes.

Vision:

Sustainable development for all through service delivery.

Mission:

To promote community participation in the allocation of scarce resources in order to realize equitable and sustainable growth and development of the entire community of Bukiende.

Goal:

To ensure effective, equitable, accessible service delivery to the community.

Objectives:

- To increase access to Agricultural inputs and technologies for increased production for both food and income security (for business)
- To identify and collect sufficient revenue to ensure adequate service delivery.
- To increase awareness and gender, HIV/AIDS, environment issues as key hindrances to community development.
- To increase access to basic education (UPE) and improve on the learning conditions within the primary schools.

- To improve on the sub county's infrastructure.
- To merge environmental and economic issues in decision making process.

Core Values:

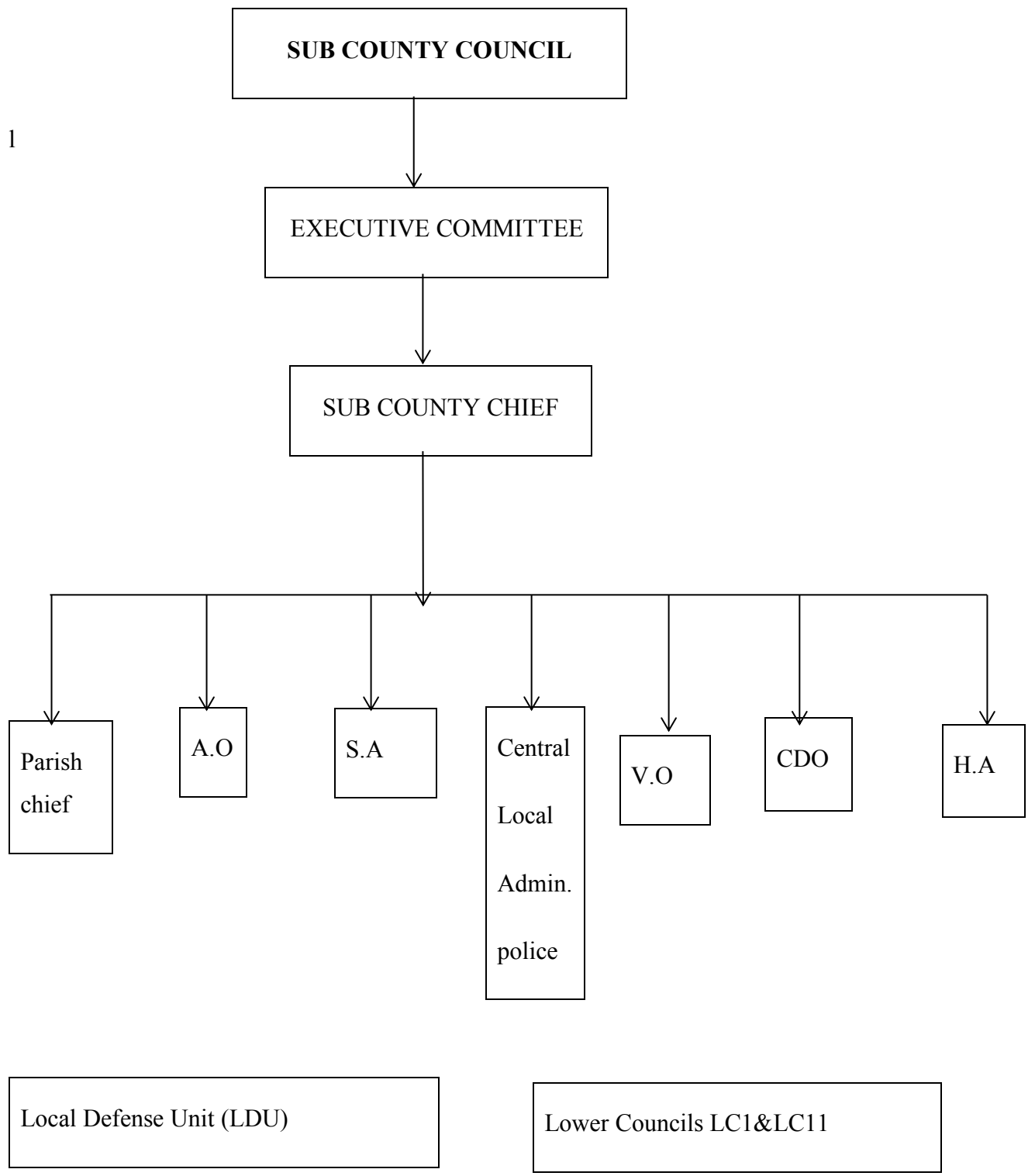
- Team work and respect for all
- Competence
- Honesty
- Authority
- Accountability
- Exercising leaders
- Professionalism.

However there are some Non-Governmental Organizations that are operating in Bukiende Sub County and these are listed below including the services they provide in various parishes of Bukiende Sub County.

NAME OF N.G.O	AREA OF INTERVENTION	PARISH
FOOD FOR THE HUNGRY	Education Food security and Livelihood Health and Nutrition Disaster risk reduction	All the seven parishes (Bumutsopa, Burukuru, Bungwanyi, Bushangi, Isango, Bunashimolo, Bumaena)
MOUNT ELGON TREE GROWING ENTERPRISE	Environmental conservation through tree planting.	All the seven parishes (Bumutsopa, Burukuru, Bungwanyi, Bushangi, Isango, Bunashimolo, Bumaena)
HEROES FOR GENDER TRANSFORMATIVE ACTION	Sexual Gender Based Violence (MIFUMI)	Bumutsopa Burukuru

	Reproductive Health Rights (AMREF)	
MULATSI CHILD DEVELOPMENT CENTRE.	Education Supporting Vulnerable children	Bumaena
OASIS UGANDA.	Child rights and violation skills training	All government aided schools
KWAMWOYO EDUCATION CENTRE.	Education Supporting Vulnerable children	Bushangi
MIDIPRO	WASH(Water, Hygiene and Sanitation) Activities	Bunashimolo.

ORGANISATION STRUCTURE OF BUKIENDE SUBCOUNTY.



A.O Agricultural Officer

S.A Sub county Accountant

V.O Veterinary Officer

C.D.O Community Development Officer

H. A Health Assistant.

There are various government programs that are being implemented in Bukiende and these include youth livelihood programs, NAADS, UCDA (Uganda Coffee Development Authority) all of which aimed at promoting Development. Through these programs such as the youth livelihood programs helped the youth to create their own opportunities thus promoting self-employment, improving their social economic potential as well as increase income levels. The NAADS programme was restructured and replaced with Operation Wealth Creation and it was launched by his excellence the president of the republic of Uganda Yoweri Kaguta Museveni.

The UCDA Uganda Coffee Development Authority is also a government authority under the Ministry of Agriculture, Crop and Animal Husbandry. It supports farmers in Bukiende Sub county and the whole of Bugisu region (Mbale, Sironko, Manafwa, Bududa, Manafwa districts) throughout the Coffee Value chain right from the nursery bed to the cup test (selling time).

It also promotes and regulates activities that take place in the coffee value chain so as to get good quality coffee.

Registration of Community Based Organizations.

A community Based Organization is an Organization operating at the sub county level whose objectives is to promote and advance the well-being of the members of the community (www.ngobureau.co.ug).

Community members are encouraged to register their various self-help groups as CBOs so that in case of a government program running at the sub county and is funding individuals or empowering individuals, it's only groups that are registered as CBOs that will be considered or they will consider individuals who belong to a registered CBO.

For example during the Implementation of the OWC program, people who belonged to a registered CBO at the sub county were at a greater advantage.

The requirements for one to register their group as a CBO include:

The constitution of the group members

Work plan

Group minutes with attendance lists attached

CDO recommendation letter

LC 1 letter

Payment (registration fee) 102,000/=

However, these CBOs are renewed after every year so that it keeps operating as a CBO and the following are the requirements for renewing a CBO

Group Constitution

Activity report

Group minutes with attendance lists attached

CDO recommendation letter

LC1 letter

Renewal fee 62, 2500/=

1.2 Background.

Uganda being one of the Agricultural countries in the East African Region that produces a variety of both food crops and cash crops, including livestock farming, fishing, and forestry, the government of Uganda put in place programs such as NAADS which was established by the government of Uganda to specifically address issues hindering Agricultural development as well as lack of knowledge about Agricultural information and improved technology among poor rural farmers.

Later, it was reorganized and substituted by Operation Wealth Creation by the President of Uganda to create a system facilitating social economic transformation by turning subsistence farmers into commercial farmers to increase household incomes and eradicate poverty.

Operation Wealth Creation operated in four implementation phases namely the initiation phase, (Phase 1), Stabilization stage (phase 2), Consolidation stage (phase 3), Hand over stage and exit stage (phase 4).

Phase one primarily concentrated on rallying and raising awareness among farmers to shift their mindset from subsistence to commercial agriculture, halt land fragmentation, and embrace suggested agronomic practices like cultivating high-yield and high-value crops.

Objectives of Operation Wealth Creation.

Overall objective

To create a system that facilitates effective national social economic transformation with a focus on raising house hold incomes for poverty eradication and sustainable Wealth Creation.

The specific objectives of Operation wealth creation:

- a) To mobilize the masses to engage in commercial Agriculture activities to boost house hold incomes.
- b) To distribute production inputs equitably and timely to boost production and productivity at household level.
- c) To facilitate rural technological upgrading to allow small holder farmers to transform themselves into small scale industrialists.
- d) To stimulate local and community enterprise development across the country.
- e) To facilitate infrastructural development across the country.
- f) To facilitate infrastructure development particularly in rural areas.
- g) To empower 68% of the population outside the money economy.

Poverty has been a major social problem in Bukiendo sub county Hence Operation Wealth Creation has been put in place to help in reducing poverty levels through the implementations of the above objectives.

James Chen (www.investopedia.com) defines poverty as a situation where individuals or communities do not have enough money and necessary items to meet their basic needs and maintain a minimal quality of life. These individuals might lack adequate housing, clean water, nutritious food, and medical care. However it should be put in mind that poverty is a social economic condition that results from a number of factors, rather than just income.

Jagranosh defines poverty as a state where people are experiencing scarcity or lack of certain commodities that are required for daily life. These include money and material things hence poverty is a multifaceted concept inclusive of social, economic and political elements.

The word poverty comes from a French word “poverty” which means poor.

The various types of poverty include:

Absolute poverty. This is also known as severe poverty or absolute poverty. It includes the lack of essential food, safe water, healthcare, education, housing. Individuals facing this form of poverty often witness the death of children due to preventable illnesses such as malaria, cholera, and diseases caused by contaminated water. This type of poverty is uncommon in developed nations, so it is predominantly found in underdeveloped countries.

Relative poverty. This is viewed from a social standpoint, reflecting the quality of life in comparison to the economic status of a community. It gauges income inequality; for instance, a family may be seen as impoverished if they cannot afford holidays or gifts for their children's birthdays.

Situational poverty. This is a temporary type of poverty based on the occurrence of an adverse event like environmental disaster, job loss, and severe health problems hence this kind of poverty comes as a result of an unfortunate event for example floods which may destroy crops thus will not have what to eat and sell hence low food supply hence situational poverty.

Generational poverty. This type is inherited from one generation to the next. This situation is even more difficult, as individuals are stuck in their circumstances with no way out, such as families experiencing poverty for multiple generations. Therefore, families experiencing this level of poverty lack the resources needed to improve their circumstances (Jensen 2009).

Rural poverty. This occurs in rural areas with population below 50,000. In such areas, there are less job opportunities, less access to services, less support for disabilities and quality education opportunities. People here mostly depend on farming and other activities available to the surrounding.

Urban poverty. This kind of poverty occurs in the metropolitan areas with a population over 50,000. The urban poor face challenges such as limited access to health and education, inadequate housing and services, violent and unhealthy environment due to overcrowding, little or no social protection mechanism.

The World Bank stated that Covid19 brought an end to a period of worldwide advancements in reducing poverty. Global extreme poverty saw a steady decline for three decades, resulting in a more than 50% reduction by 2015. In the following years, poverty continued to decrease, although at a slower pace due to weak economic growth. The pandemic caused the largest hindrance to the effort to combat global poverty since 1990. Increased levels of debt in numerous nations along with escalating costs of food and energy, driven partly by events in Ukraine and climate-related disasters, have hindered efforts to make advancements in reducing poverty. These obstacles have caused the world to deviate even more from the target of eradicating poverty by 2030.

In Africa, According to the World Bank, poverty in Africa may be lower than the current estimates though the number of people living in extreme poverty has substantially grown since 1990.

The United Nations Development Programme uses different indicators in its Human Development Index to assess poverty in Africa. This includes the lifespan at birth, typical duration of school attendance, and income per person. In the UN, education is connected to poverty as those who lack literacy skills have limited opportunities to secure a well-paying job and improve their quality of life.

In the Annual Development Report published by the UN, African countries of Malawi, Liberia, Burundi, Eritrea, Chad, Sierra Leone and Niger are the last placed where poverty continues to increase especially in the rural areas.

Extreme poverty has led to hunger in Africa thus one fifth of the people living in Africa are considered malnourished hence giving the continent the highest rate of malnourished people in the whole world. The leading causes of poverty in Africa among others include:

Population growth rate despite numerous education and prevention campaigns thus affecting economic growth and development. Basing on the current UNICEF report, Africa will double to two billion people by 2050.

War and crises. These include wars in South Sudan, Somalia, Nigeria, Mali, DRC, Central African Republic etc. These make Agricultural production to come to a stand still, many people flee, and others are forcefully expelled from their homes and are dependent on outside help.

Climatic conditions. These include devastating floods, extra ordinary drought that lead to crop failures which results into regular hunger crises and famine in Africa especially East Africa and the Sahel region.

Illnesses. AIDS, Malaria, Ebola, and similar diseases are more likely to spread quickly and remain untreated due to poor education and insufficient healthcare in many regions. The declining average life span results in a rise in the orphan population, which in turn reduces the labor force in Agriculture, resulting in decreased food production.

Inadequate Agricultural infrastructure. These include roads, irrigation schemes, storage facilities, Agricultural machinery, all of which lead to low food production hence causing poverty.

Unjust trade structures. These are created by rich countries by shielding their markets with high Agricultural tariff and heavily subsidizing their own Agriculture thus repatriating profits back to their own country and slowing down the development of Agriculture on the African continent leading to poverty. These rich countries include Governments of the US, European countries, and other prosperous states.

According to the World Bank, Uganda's population lives below the poverty line have fluctuated over the last seven years.

About 30% of the nation's population lived in poverty during 2019-2020, which was similar to the poverty rate of 30.7% in 2012 and 2013. The rural households' experience largely drives the fluctuating poverty rate pattern. During 2012 to 2013, as well as 2016 to 2017, there was an increase in the poverty rate. In 2019 and 2020, there was an improvement before the pandemic as a result of favorable weather conditions which boosted rural incomes. Nevertheless, the pandemic caused both rural and urban communities to fall into poverty.

During this period, the GDP (Gross Domestic Product) remained constant and may have worsened in urban areas which affected the extent to which different population groups benefit from GDP and the transmission of growth into poverty.

According to Wikipedia.org, the percentage of Ugandans living in absolute poverty has been on a substantial decline and the ministry of finance projected that extreme poverty level will be reduced by 10% in the future. Uganda was listed 9th of the most successful country in Africa regarding poverty eradication and this success has been attributed to the following strategies for example education, progress, National Development Plan (NDP1), NDP II etc.

Education.

In Uganda, the quality of life for 2017 is measured at 54.7% based on economic and social rights including education, health, food, housing, and work (adequate income). Uganda's literacy rate is 76%, so it has implemented free primary and secondary education through Universal Primary and Secondary Education to combat illiteracy, with over 90% of the population completing primary education.

Progress

Uganda having successfully achieved the millennium development goal target of halving the number of people living in extreme poverty way ahead of the 2015 deadline, it has made progress since then towards poverty eradication.

Today an estimate number of 25% live in extreme poverty but Uganda is on course to reduce this by 10%.

NDP I (National Development Plan I).

This strategy was initiated in 2010 with the aim of eliminating poverty in Uganda. It took the place of the Poverty Eradication Action Plan (PEAP). It concentrated on the main industries that offer tangible goods and services such as Agriculture, tourism, oil and gas manufacturing, forestry, etc.

It also concentrated on the support sector that offers infrastructure for the products such as transportation, energy, water, trade, and financial services.

NDP II

This was introduced to guide Uganda's path to poverty eradication, with its main goal being "to propel Uganda to middle-income status with a GDP per capita of USD1003".

Its aims include;

To strengthen the country's competitiveness in achieving lasting wealth, generating jobs, and promoting inclusive growth by boosting sustainable production and productivity, as well as adding value in key areas of growth.

Improving both the quantity and standard of strategic infrastructure to boost the nation's competitiveness by improving human capital development and enhancing mechanisms for quality, effective, and efficient service provision.

Poverty in Mbale district

According to the reliefweb.int, a survey carried out in districts of Mbale, Sironko, Pallisa and Kumi show that 22561(90%) of the 23179 households studied said they were poor with many depending on subsistence farming as their major source of livelihood.

Mbale municipality is located 245km from Kampala and 50km from Uganda's border with Kenya.

1.3 PROBLEM STATEMENT

Operation Wealth Creation was created to correct the past failures of NAADS and other programs so as to promote productivity, poverty reduction and sustainable food security.

(NRM manifesto, 2016-2021)

Despite the attention and resources devoted to OWC program to improve welfare and productivity, there is limited information about the impact of OWC on poverty reduction given the high population hence this prompted me to assess the impact of Operation Wealth Creation on poverty reduction in Mbale district with Bukiende sub-county as the case study.

1.4 OBJECTIVES OF THE STUDY.

The objectives of the study were as follows.

To find out how Operation Wealth Creation has helped to reduce to reduce poverty in Mbale district, Bukiende sub county as the case study.

Research objectives.

To find out the development and progress of Operation Wealth Creation in reducing poverty in Mbale district, Bukiende sub county.

To find out the nature of services and products provided by the Operation Wealth Creation in reducing poverty in Mbale district.

To find out the challenges faced by the Operation Wealth Creation in implementing its objectives to reduce poverty in Mbale district (Bukiende sub county) and strategies that were put forward to overcome those challenges.

1.5 RESEARCH QUESTIONS

How has Operation Wealth Creation progressed in reducing poverty in rural livelihoods in Bukiende Sub County, Mbale district?

What is the nature of products and services provided by Operation Wealth Creation to reduce poverty in Mbale district/Bukiende Sub County?

What are the challenges faced by Operation Wealth Creation during the implementations of activities to reduce poverty in Mbale district, Bukiende sub county.

1.6 GEOGRAPHICAL LOCATION.

The study was conducted in Bukiende Sub County in Mbale district found in Eastern Uganda. The area has rich agricultural land with fertile soils and good climatic conditions good for implementing OWC activities though it is highly populated which has caused scarcity of land for cultivation and other farming activities. The area was selected for study because it has a high number of beneficiaries of Operation Wealth Creation programme.

1.7 TIME SCOPE.

The study was carried out for a period of one month.

1.8 SCOPE OF THE STUDY.

The study mainly focused on the impact of Operation Wealth Creation on poverty reduction in rural livelihoods in Mbale district, case study of Bukiende Sub County. It specifically dealt with how it has helped to fight poverty, the products and services offered in order to reduce poverty, and it also looked at the challenges faced by the Operation Wealth Creation in implementing its activities to reduce poverty in Bukiende Sub County under Mbale district.

Subject of the Study

The subject of the study was the impact of OWC on poverty reduction in Bukiende Sub County in Mbale district. It shall specifically look at relative poverty.

1.9 Significance of the study.

The study enabled me as a student of Uganda Christian University to acquire a bachelor's degree in social work and social administration since it is part of the way to get awarded with a degree.

The study enabled policy makers at national and local levels to improve practice during the implementation of Operation Wealth Creation activities within the sub county so as to make the program more efficient and effective in reducing poverty.

The study enabled Mbale district and Bukiende sub county officials such as extension workers and the entire community to acquire more knowledge and information about operation wealth creation program.

The study enabled me while in the field to get more knowledge about operation wealth creation.

Conceptual framework.

The study was conducted with the following conceptual framework thus independent variable, dependent variable, and their dimensions and indicators which will guide the study.

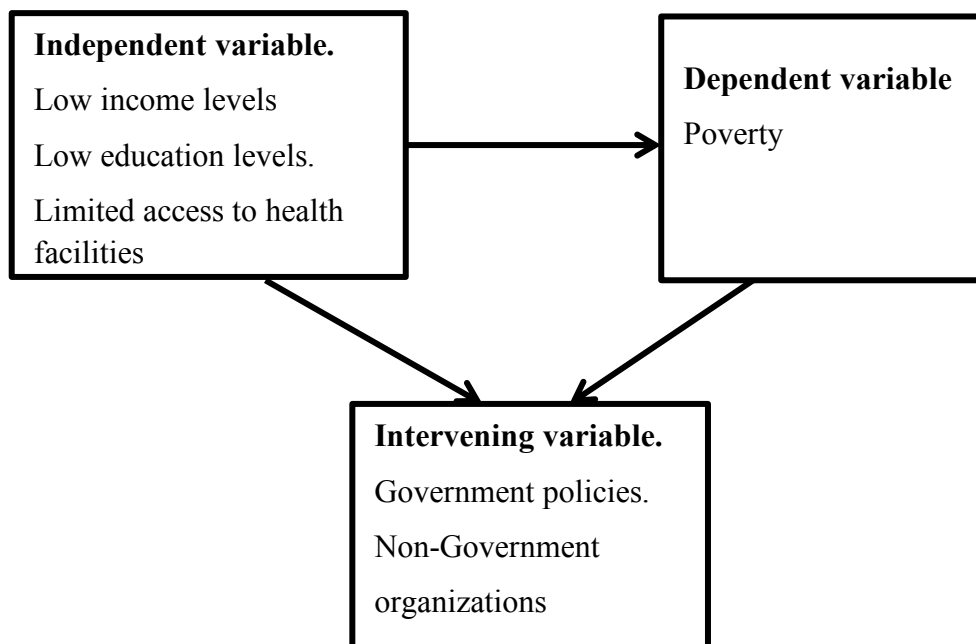
Dependent variable is a variable whose value depends on that of another thus it changes as a result of the independent variable manipulation for example a test score is a dependent variable.

An independent variable is one whose variation does not depend on that of another for example time, density, mass.

An intervening variable is influenced by the independent variable and then influences the outcome of the dependent variable hence the intervening variable intervene between the independent and dependent variables to navigate their relationship.

However a variable is an element or a feature that is liable to vary or change.

From the topic of study the conceptual framework was as follows.



Definition of key terms

OWC Operation Wealth Creation.

GDP Gross Domestic Product

NDP National Development Pl

CHAPTER TWO

Literature review

2.0 Introduction.

In this chapter I presented related literature about OWC programme, the different activities of OWC and how -they contributed towards poverty reduction including the challenges that OWC faced during the implementation in reference to Bukiende Sub County in Mbale District, as according to the study objectives.

This information was got from / cited from different relevant online sources and printed sources i.e. journals, books, reports, textbooks, etc. online sources are identified using different search engines and databases i.e. Google.

Classical poverty theorists believe that people become poor according to choices and lack of “self-control” that affects their productivity, hence ending up in poverty. According to this source, individuals are largely responsible for their wellbeing. This theory supports OWC in a way that an individual has a choice to join farmer groups, or access and benefit from government programmes, such as OWC which was mandated to provide agricultural inputs and endeavor that these inputs are accessed by rural farmers especially smallholder farmers who lack financial ability (Gordon 2010) to buy inputs early enough in the crop season as well as those who cannot obtain credit from Financial Institutions (Robert and Mescharch; 2018) and free extension services by OWC.

2.2 different activities implemented under OWC (Programme).

OWC is a programme for Museveni intended to facilitate socioeconomic transformation with a focus of raising household incomes and wealth creation by transforming subsistence farmers into commercial farmers (Robert and Mescharch, 2018).

He implemented OWC in July 2013 to create a system that facilitates effective national economic transformation with a focus on raising household income hence the final approval and launch of OWC was carried out on 7th July, 2014 under the minute number 186CT,2014,(Robert and Mescharch, 2018).

Government can intervene in Agriculture, to offset high costs of supplying inputs (acquiring in inputs) for farmers, (Wiggins and Brooks 2010). Thus it is in this that OWC was mandated to provide Agricultural inputs and also make these inputs accessible to rural farmers particularly small hold farmers who lack financial ability (Gordon 2010)to buy inputs in the early crop season and also who cannot obtain financial credit from financial institutions (Robert and Mescharch, 2018).

According to Masaba and Semakula (2013) OWC has helped to provide Agricultural inputs such as Cash crop seeds such as coffee, tea, citrus, mangoes, pineapples and apples. It also supports agribusinesses and value chain development to improve household food security and incomes. (Masaba and Semakula, 2013). Besides the above, OWC also provides fertilizers and helps in adapting to improved farming methods to transform their farming into commercial agriculture so as to eradicate poverty at household levels in Uganda (Robert and Mescharch, 2018).

OWC supports Agricultural investments in Uganda by National agricultural transformation programmes to improve household income community-level co-ordination of the NAADS programmes activities with similar objectives of transforming the agricultural sector (OWC 2021).OWC was created as a single-spine agricultural extension method directly under the Ministry of Agriculture, Animal Industry and Fisheries (MAAIF) as per (MAAIF 2021).

OWC being a new approach to Agricultural extension services, several stakeholders including civil servants, political, religious and cultural leaders as well as farmers and their associations were involved (Peters, KIganda and Rose).

The reason behind the government providing free inputs to farmers through OWC was to guarantee agricultural recovery and food security in response to inadequate private sector input marketing channels. Nevertheless, it is often necessary for government agricultural input distribution to focus on providing recovery and relief inputs specifically to support vulnerable farmers. (Govere et al, 2009) suggested.

2.3 Contributions of OWC programme towards poverty eradication.

According to the research that was conducted in Bukiende Sub County 2019, most of the respondents have benefitted from the OWC by improving literacy among farmers, sensitizing farmers to create their own jobs and empowering farmers with technical skills.

In collaboration with NAADS, OWC is working on rallying stakeholders in the industry to create value chain platforms like the fruit sector, the coffee sector, and the organic farmers' platform. Through these platforms, farmers can enhance their ability to negotiate, gain knowledge, and explore markets, ultimately improving their ability to access and demand better services.

In the study conducted by Ejang and Winnie (2019) Apac district indicated that OWC has increased times spent on Agricultural activities by both men and women, hence the general wellbeing of farmers greatly improved in terms of resources, division of labor, and decision-making power.

Rapid population growth, urbanization, and market liberalization globally have a direct impact on farming, leading to a shift towards a more market-oriented and competitive approach. These shifts affect farmers, who must enhance their management abilities and expertise in order to adapt to the evolving agricultural landscape. Farmers require help from extension agents in order to improve their management skills and operate their enterprises successfully. Though for many extension workers, business management is often a challenge as their experience and practice has been largely focused on Agricultural production and technology transfer hence these extension workers need to understand some of the concepts and practices of farm business management as applied to their day to day extension work.(Jam et al,2009)

CHAPTER THREE: METHODOLOGY

3.0 Introduction

In this chapter I discussed the methodology of this study and included Research design, Area of study, study population, sample size, sampling techniques, Data collection Instruments, Data type and sources, Research procedure, Data processing analysis.

3.1 Research Design

A research design is the chosen strategy and analytical approach to effectively combine various study components in a logical manner, ensuring thorough investigation of the research problem. This approach allows researchers to answer research questions, achieve study objectives, and address the research problem (Vaus, 2006).

The study adopted cross-sectional research design, which involved case study with mixed methodology to facilitate collection of qualitative and quantitative data needed to answer the research questions in an in-depth manner and this enabled me as a researcher to provide a detailed qualitative and quantitative understanding of activities being implemented under operation wealth creation (OWC), how Operation Wealth Creation (OWC) contributed to reduction of poverty and how the challenges faced in the implementation of Operation Wealth Creation (OWC) affected its goal of reduction of poverty in Bukiende Sub-County, Mbale district.

3.2 Area of study.

The area of study was Bukiende Sub County in Mbale district.

3.3 Study Population

A study population is a group considered for study or statistical reasoning. The study population comprised of the farmers who have benefited from Operation wealth creation in Bukiende Sub county, Community Development Officer of Bukiende Sub county, OWC coordinator Bukiende Sub county(Agricultural Officer and Vetinary officer), LC1 chair persons of the selected parishes of Bukiende sub county, LC3 chairperson of Bukiende sub county.

3.4 Sample Size determination

This in my study referred to the number of participants or observations included in the study. This number was represented by n. According to Rona (2018) and Pamela and Robert (1995), they state that for a given population less than 1000, 10% sample size is statistically recommended. Further recommended that the minimum number of sample size for any kind of meaningful number of participants, the sample size should not exceed 100 and thus the sample size I used was 24 out of 55 beneficiaries, i.e beneficiary's farmers from each of all the seven parishes.

3.5 Sampling techniques.

These are methods by which I selected the group of people that I required to collect data from.

The respondents were selected using the sampling techniques as explained below.

3.5.1 Purposive Sampling

This referred to a group of non-probability sampling techniques in which units were selected because they had the characteristics I needed in the sample thus they were selected on purpose. All key informants were selected using purposive sampling.

3.5.2 Simple random sampling

This is where I randomly selected a subset of participants from a larger population where each member of the population had an equal chance of being selected for example I selected five farmers or beneficiaries from each parish out of the many farmers or beneficiaries in those respective parishes.

3.6 Data Collection methods.

This involved me gathering specific information so as to get results and It's a systematic process of gathering observations or measurements.

Hence the sources of data that I used in this study were both primary and secondary data sources.

3.6.1 Questionnaires.

Here is where I asked each person to respond to the same set of questions in a predetermined order (Sounders et al., 2013). Questionnaire techniques enabled me to collect primary data

efficiently and effectively. Hence this enabled me to collect data from respondents of a larger sample size which helped me to save time during data collection and as well, uniform information was provided to me from all the selected respondents and hence there was no room for bias from my side since all the information provided was uniform. These questioners were given to the selected respondents to fill in the required information.

3.6.2 Interview.

This will involve me in gathering information through verbal interaction with Key Informants for example the beneficiaries of operation wealth creation. Here I interacted with the various experts who had knowledge about Operation Wealth Creation and these included the Agricultural Officer, the Veterinary officer, the Chair person LC3.

3.6.2 Focus Group Discussion.

This will involved me gathering people from similar backgrounds or experiences so as to collect data from them for example the beneficiaries from a particular selected parish were used to gather information under focus group discussion.

3.6.2 Observation.

This is the process of data collection where I recognized, analyzed and noted facts often involving measurements and instruments.

3.7 Data collection instruments.

These included:

3.71 Interview guide.

This involved a list of questions that the I the interviewer hoped to cover during the course of the interview to respondents and this helped me to outline the most important issues. Information was gathered through key informants and focus group discussion and this will helped me to create atmosphere for explanation to obtain more information from both primary and secondary data sources.

3.72 Reliability

This is the extent to which a questionnaire, test, observation or any instrument procedure produces the same results on repeated trials (miller 2002).

This enabled me ensure consistency and accuracy of the research findings and reduction in bias.

3.9 Data Analysis

This study involved both qualitative and quantitative data collection.

3.91 Qualitative data collection.

This is where I collected non numerical information such as words, images and observations so as to understand individuals' attitudes, beliefs and motivations in a specific context for example finding out how the farmers in Bukiende Sub county have benefited from Operation Wealth Creation, the various projects they have started up as a result of operation wealth Creation for example farms, livestock, etc.

3.91 Quantitative data collection.

In this method I collected numerical data that I analyzed using statistical methods. For example the number of farmers who had benefited from Operation Wealth Creation, the number of projects selected farmers had set up as a result of operation wealth Creation, etc.

The recurrent issues which emerged in relation to each guiding question was presented in results with selected direct quotations from participants offered as illustrations.

3.10 Data type and sources.

The data involved both primary and secondary data sources as explained below.

3.10.1 Primary Data sources

This involved me collection data directly from main sources, experiments, interviews, surveys, etc.

For example primary data sources here included farmers/ beneficiaries of each parish under Bukiende Sub County

It involved me using either qualitative and quantitative methods or a combination of both to gather first-hand information on a subject of study (Dawson, 2002; Ahiadeke, 2008). And thus my study involved both qualitative and quantitative methods.

Primary data was collected directly from Bukiendo Sub County in Mbale district using semi structured questionnaire consisting of both close ended and open ended questions. The Questionnaire was used to collect data from individual farmers and farmer groups while

Interview guide was used to collect data from key informants such as the Veterinary officer, Agricultural Officer and the Chair person LC3 (all are staff of Bukiendo Sub County)

3.10.1 Secondary Data Sources.

This is where I collected data from already existing sources for example I referred to text books, journals, newspapers, websites etc and this is second hand information since the data was collected by someone else and I relied on it in reference to my topic of study so as to have a wider understanding of the topic.

Secondary data was collected from documentary evidence such as files, memos, textbooks, journals, annual and quarterly reports, online published articles, magazines and resource centres and this Secondary data will helped to back up the primary data I had collected.

3.11 Ethical Consideration

I considered the ethical conduct of research and paid attention to all ethical issues for example I obtained an introductory letter from the Faculty of the school of Social sciences, Department of Social work and Social administration under Uganda Christian University Mukono and I also made a self-introduction to the community for data collection.

CHAPTER FOUR.

DATA PRESENTATION, INTERPRETATION, AND ANNALYSIS OF FINDINGS

4.1 Introduction

This chapter provides data presentation, interpretation, and analysis of findings. The research embraced a quantitative study which involved use of questioners to collect data and qualitative study which involved the key informants and for us group discussions.

The presentation of findings was in relation to the objectives of the study which were: to find out the development and progress of Operation Wealth Creation in reducing poverty in Mbale district, Bukiende sub county, to find out the kind of services and products provided by the Operation Wealth Creation in reducing poverty in Mbale district, to find out the challenges faced by the Operation Wealth Creation in implementing its objectives to reduce poverty in Mbale district and the possible solutions to the challenges (Bukiende sub county), following those objectives, the data presentation, interpretation and analysis of the findings are as shown below.

4.2 Demographic characteristics of the beneficiaries of Operation Wealth Creation.

Table 1

4.2.0 Marital status of Respondents.

	Frequency	Percentage	Valid Percent	Cumulative percent
Single	5	9.1	9.1	9.1
Married	16	29.1	29.1	38.2
Widowed	13	23.6	23.6	61.8
Valid cohabiting	13	23.6	23.6	85.2
Divorced	8	14.5	14.5	100.0
Total	55	100.0	100.0	

Table 2**4.2.1 Demographic Characteristics of Respondents.**

Variable	Category	Frequency	Percentage
Tenure	Own	22	40.0
	Rent	33	60.0
Level of Education	Primary	20	36.4
	Secondary	07	12.7
	Tertiary	06	10.9
	University	06	10.9
	None	16	29.1
Number of members in the family	Less than four people	10	18.2
	Exactly four people	23	41.8
	More than four people	22	40.0
Number of school going children	One child	09	16.4
	Two children	34	61.8
	Three children	09	16.4
	Four children	03	5.5
Number of meals in a day	Once a day	20	36.4
	Twice a day	25	45.5
	Thrice a day	10	18.2

The above results in table 2 indicate that 60% of the respondents were living in rentals and about 36.4% of them had attained primary level of education and 29.1% had not attained any lev of education.

Most of the respondents had a total of four or more household members and about two or more school going children.

Nearly 45.5% of the respondents eat twice a day and 36.4% eat once a day.

4.2.2 Economic Characteristics of the respondents

Table 3

Variable	Category	Frequently	Percentage
Occupational status	Employed	21	38.2
	Unemployed	34	61.8
Monthly income	Less than 14 Us dollars	03	5.5
	More than 14 Us dollars	10	18.2
	Less than 30 Us dollars	03	5.5
	More than 30 Us dollars	09	16.4
	Not earning money	30	54.5
Skipped food because there was no money	Yes	09	16.4
	No	46	83.6
Kind of food eaten in different families	Enough but not the food we want	02	3.6
	Sometimes not enough to eat	20	47.3
	Often not enough to eat	18	32.7
	kind of food we want to eat is enough	09	6.4
Amount spend on children's needs	More than 4 Us dollars but less than 10 dollars	40	72.7
	More than 11 Us dollars	15	27.3

In the above table 3 results, It was found out that 61.8% of the respondents were unemployed. Most of the respondents had a family income of more than 14 US dollars but less than 20 US dollars which is equivalent to ughs 74,000/= and majority of them were not working and therefore they were not earning any money.

83.6% showed that the respondents benefited a lot from Operation Wealth Creation Program. Most of the respondents spent more than four US dollars but less than 10 Us dollars on basic needs.

With the help of the Key informant interviews and focus group discussions conducted, I got various responses on how the development and progress of operation wealth Creation in reducing poverty, I also got responses on the nature of products and services that were provided by Operation Wealth Creation to reduce poverty and I was also able to know the challenges that were encountered during the implementation of the Operation Wealth Creation activities so as to achieve its goals and objectives to reduce poverty in Bukiende sub county, Mbale district.

4.3 Perception of Poverty from the Beneficiaries and respondents in Bukiende Sub county Mbale District.

As based on information got from the key informant guide and Focus Group discussions, people in Bukiende revealed the following information about the perception of poverty.

Poverty is perceived to exist when people lack means to satisfy their needs for example lack of money which limits access to those basic needs hence they took it that if one lacks money they would not access basic needs and that if one had money they would be able to access basic needs.

Also they perceived it that it's when people have no money that they lack a proper balanced diet hence they were grateful to OWC which empowered them with farm inputs and also encouraged them to have their own jobs so as to boost household income so that people can have self-help projects out of the farm inputs and seedlings or livestock they have been given by OWC so as to earn money from these projects and be able to access these basic needs.

A sample below is one of the farmers (In an orange cape) who utilized the knowledge, farm inputs and seedlings supplied by Operation Wealth Creation. He (Mr. welishe Joseph) was able

to set up a farm of mangoes, Avocadoes, Coffee etc and also used knowledge given by OWC on irrigation and maintenance of his plants so as to get good yields.



He shared and Said in a statement that when his mangoes and Avocadoes are ready he takes them to the market to get money and thus able to meet his basic needs.

He put up a water source (Sort of a pond with rainwater stored in it)with and a tank so that he stores water in the tanks and he used irrigation pipes to irrigate his mangoes, coffee, and Avocadoes during the dry season so as to get great yields.

Hence given the above This beneficiary said he was able to meet his basic needs and also take his children to school.



The above are his mangoes and Ovacados meanwhile he also has an acre of coffee at another one of his farms all from Operation Wealth Creation.

4.4 The Development and Progress of OWC in Reducing Poverty in Bukiende Sub county Mbale District.

- Operation Wealth Creation as described in chapter one above was a government initiative that was started by the government of Uganda.
- A number of households benefited from this program in Bukiende Sub county Mbale District in a way that OWC implemented it's activities and hence it progressed well in helping to reduce poverty and increase household incomes through the strategies discussed below.
- OWC distributed farm inputs for example, seeds fertilizers, herbicides, pesticides, etc.
- Farm inputs are resources that are used in farm production hence these were supplied by OWC to various individuals in Bukiende Sub County.
- OWC also helped to facilitate rural technological upgrading through providing knowledge to farmers on modern farming methods using improved technology for example irrigation, application of fertilizers, use of pesticides and herbicides so as to boost production and increase house hold income.
- OWC encouraged masses to engage in commercial farming rather than subsistence farming so as to get market for their produce.
- OWC also encouraged farmers to create their own jobs through commercial farming and this helped to boost income and above all reduce on poverty levels in Bukiende Sub County in Mbale district.
- OWC also helped to stimulate local and community enterprise development through encouraging farmers to form farmers groups and register them as legally operating farmer groups.

Below is a sample of some of the farmers who benefited from OWC in various parishes of Bukiende Sub County.

Name of Beneficiary	Name/Quantity of Items received	Parish of Beneficiary	Sub county of Beneficiary
Wanda Wilson	I bag of Cassava, 10 kgs of beans, 10 Avocado seedlings	Bushangi	Bukiende
MoitinJoseoh	10kgs of Maize, 10kgs of beans, 20mango seedlings	Bumutsopa	Bukiende
Mr Okong Wilfred	I bag of Cassava, 5kgs of maize,10 mango seedlings	Bumaliro	Bukiende
Mulekwa Victor	I bag of Cassava, 10 kgs of beans, 10 Avocado seedlings	Bumaena	Bukiende
Woniaye Juliet	I bag of cassava, 10kgs of maize, 10 Mango seedlings	Bushangi	Bukiende
Mayende Yefusa	2bags of cassava, 5kgs of maize,10 Avocado seedlings	Bushangi	Bukiende
Wokiri Stephen	30 seedlings of coffee, 10kgs of maize, 2 bags of cassava	Bunashimolo	Bukiende
Welishe Joseph	10mango seedlings,10 Avocado seedlings and 40 coffee seedlings	Burukuru	Bukiende
Masete Micheal	10kgs of maize 20 coffee seedlings	Bunashimolo	Bukiende
Makholo James Elly	10ks of maize,10 Avocado seedlings	Isango	Bukiende
Wandeka Paul	10kgs of beans, 10 mango seedlings,5kgs of maize	Isango	Bukiende
Mwenyi Betty	I bag of cassava,10 mango seedlings	Burukuru	Bukiende
Walutsyo Tom	10kgs of maize,30 seedlings of coffee,	Bunashimolo	Bukiende

Nambuya Rose	10kgs of beans,5 kgs of maize	Bushangi	Bukiende
Kitsamba Damiano	1 bag of Cassava, 10kgs of maize,10 mango seedlings	Isango	Bukiende
Wasilwa Simon Peter	10kgs of beans,1 bag of cassava,10 Avocado seedlings	Bumutsopa	Bukiende
Betty shillo	1 bag of cassava, 10 Mango seedlings,5kgs of maize,	Bushangi	Bukiende
Magombe Yefusa	1 bag of cassava, 10 kgs of maize, 10 mango seedlings	Isango	Bukiende
Wangaya Paul	1 bag of cassava, 5kgs of maize,20 mango seedlings	Bungwanyoni	Bukiende
Dumba Florence	1 bag of cassava,20 mango seedlings,10kgs of maize.	Bungwanyoni	Bukiende
Mulekwa Nathan	4 bags of cassava, 5kgs of maize, 20 mango seedlings	Bumaena	Bukiende
Peter Majeme	1 bag of Cassava,10 kgs of maize, 10 Avocado seedlings	Bumaena	Bukiende
Rongoro primary school	40 mango seedlings,1 bag of cassava, 10 kgs of beans	Bumaena	Bukiende
Masheso Micheal	20 seedlings of mangoes,10 kgs of maize,2 bags of cassava	Isango	Bukiende
Natisi Micheal	10 seedlings of mangoes, 40coffee seedlings, 5kgs of maize	Burukuru	Bukiende
Wakoya Andrew	10 seedlings of mangoes, 10 kgs of maize, 2bags of cassava	Bunashimolo	Bukiende
			Bh

4.5 The nature of products and services provided by Operation Wealth Creation to reduce poverty in Bukiende Sub county, Mbale district.

OWC offered the following services and products in abide to reduce poverty in Bukiende Sub County.

OWC established improved planting materials to farmers in Bukiende Sub county for example maize and beans of which these have a quick maturity period.

OWC also in its activities mobilized and encouraged masses to engage in commercial Agricultural activities so as to boost household incomes.

OWC also distributed production inputs equitably and timely to boost production and productivity at house hold levels.

OWC also helped to improve farmers' bargaining power , knowledge and market search as well as strengthened their voice in demanding and accessing better services.

4.5.0 Below is a picture showing the products that were supplied by Operation Wealth creation.

These among others included beans, maize, cassava, Mango seedlings, avocado seedlings, etc



4.6 Challenges faced by Operation Wealth creation during the implementation of its activities and possible solutions that were put in place to address the challenges.

This was the third objective in my study and in attempt to answer it, in my findings, I was able to get information about the challenges that were faced by OWC during its implementation and possible solutions that were brought up to address the challenges was answered in the findings of the different sections below.

4.6.0 According to General Salim Saleh as one of the fore front implementers of the OWC program, the following were the operational challenges and gaps that affected the implementation of Operation Wealth Creation.

- Delivery of low quality inputs. These affected production as from some of the beneficiaries for example stunted growth of some of the plants and this resulted into most plants not growing hence low yields and poor yields of the crops.
- Late delivery of inputs to farmers. Most of the crops as said by the respondents were delivered during the dry season which was not favourable for planting hence most of the inputs that were supplied during the wrong seasons were not able to produce good quality yields.
- The high mortality rate of planting material and breeding stock attributed to drought and poor management. This was as a result of delivering inputs to farmers in the wrong season and these were planted in the wrong season (drought) and also poor management by the farmers.
- Delivery of inputs to wrong agro-ecological zones. Agro-ecological zones are regions with alike weather patterns that impact their capacity to sustain rainfed farming. Hence some of the inputs that were delivered by OWC were not doing well in Bukiende I,e the soils were not supporting the growth of these inputs that had been supplied to farmers hence leading to poor yields, stunted growth etc.

- Poor harvest handling and processing. This was as a result of poor storage facilities that exposed the harvest to pests like insects, birds, hence leading to volume losses, grain damage and contamination thus this contributed to loss of valuable quantities and grain quality leading to lower price offers and higher economic losses.
- Inflation of prices in the market hence this affects house hold incomes of farmers.
- Supply of air or nothing in a way that some of the areas were not reached out to get supplied with the inputs of OWC hence affecting the effective and efficient implementation of the program.
- Beneficiaries also conived with the suppliers and sign for technologies without a receipt in exchange for money.
- Some sub county chiefs tossed farmers around during the distribution exercise to frustrate them with the aim of sharing the inputs with few farmers.
- Another challenge was that of conmen who asked people for money so as to get the inputs claiming to be part of the Operation Wealth Creation team yet the inputs were supplied at no cost.
- There was also a challenge of suppliers giving inputs to farmers who do not need them leading to wastage of resources. Such farmers instead sold the produce and used the money for other purposes.
- The signatures of Operation Wealth Creation Officers were forged by suppliers and other actors for person benefits.
- The supply chain of the inputs was also affected in a way that there was collusion between suppliers and other actors.
- Falsification of documents at different levels.
- Some of the OWC officers were not were not generally effectively involved in the distribution process of the inputs.

- There was a problem with multiple organizations, such as politicians, religious leaders, and agencies, duplicating input supply activities, resulting in varying figures being reported for inputs delivered.
- Some of the Chief Administrative Officers were too busy and at the end of it all they handed over their roles to junior officers who were easily intimidated by politicians.
- Some of the extension workers who were recruited and facilitated were not available on the ground to perform their assigned duties and roles.
- There was also a challenge of the existence of weak farmer groups and institutions.
- Climate change and lack of water for Agricultural production and irrigation.
- There was no proper plan for the evacuation, bulking and marketing of produce.
- Low produce prices and this was as a result of the exploitative behavior of middle men or traders thus affecting incomes of the commercial farmers.
- There was also a problem of land fragmentation and degradation especially for those that did not have adequate planting space to accommodate the inputs.
- There was also a challenge of inadequate policy frame work and regulation in Agriculture for example the policy on regulation of the counterfeiters and saboteurs was not in place.

4.6.1 Possible solutions that were put in place to address the above challenges that were faced by Operation Wealth Creation.

According to Uganda radio network .com the following were the recommendations that were put in place to address the above challenges.

- Continued deployment of officers in areas with gaps. It was said that most areas that required deployment were found in new districts, new constituencies and areas where officers have passed on or have been discounted.

- Formation of farmer groups. This begun during the phase one of Operation Wealth Creation (Initiation) and continued up to phase two (Stabilization). Organizing farmers would help to translate into improved farmer management and collective bargaining power for better prices against exploitative traders.
- Water production. Areas that needed immediate water attention were to be identified by OWC and be in touch with the ministry of water and Environment so as to address the issue of irrigation to improve agricultural production.
- Establishment of a regional logistics center and electronic voucher system. It was suggested that these hubs be used as one-stop centers for all logistical needs supported by Operation Wealth Creation (such as certified seeds, pesticides, market connections, extension services, etc), and all farmers were instructed to obtain their farm supplies exclusively from these centers.
- Need for Operation Wealth Creation to adopt new administrative structure responsive to the needs and tasks of phase two (consolidation) of the operation.

CHAPTER FIVE

SUMMARY OF FINDINGS, RECOMMENDATIONS AND CONCLUSIONS.

5.1 Introduction.

This chapter presents a summary of the findings, conclusions and recommendations in line with the research questions and objectives. This evaluation study on the impact of operation wealth Creation on Poverty reduction in Bukiende Sub County in Mbale district presented the data as below from the respondents who were willing to fill the questionnaires and be interviewed by the researcher as well.

The study was concluded with three specific objectives namely:

To find out the development and progress of Operation Wealth Creation in reducing poverty in Mbale district, Bukiende sub county.

To find out the nature of services and products provided by the Operation Wealth Creation in reducing poverty in Mbale district.

To find out the challenges faced by the Operation Wealth Creation in implementing its objectives to reduce poverty in Mbale district (Bukiende sub county) and strategies that were put forward to overcome those challenges.

Following the objectives, the summary of the findings of the study were as summarised below.

5.1.0 Introduction Community perception on poverty

The study found out that illiteracy among beneficiaries of operation wealth Creation and their families was as a result of poverty levels. This was supported by the findings from the Questionnaires showing a small number of those that had attained primary level of education and those that did not attain any education at all.

It is also supported by the findings from focus group discussions that some of them could not be employed because of low education levels hence making it hard for such beneficiaries to get jobs and meet their own basic needs.

Fortunately, Operation Wealth Creation came in place to encourage such beneficiaries to create their own jobs through shifting from subsistence farming to commercial farming hence sell employment.

5.1.1 The extent of operation wealth Creation in reducing poverty in Bukiende Sub county Mbale District.

A number of households benefited from OWC and this helped to boost house hold incomes in Bukiende Sub county Mbale district given the fact that farmers started taking part in commercial farming using modern farming methods that they had acquired from Operation Wealth Creation through improved farmers literacy hence adopting commercial farming to subsistence farming helped in improving income levels of farmers in Bukiende Sub county.

A number of farmer groups enterprises were formed as a result of implementation of Operation Wealth creation activities of which these groups were linked to potential markets hence improved production and improved access to better markets. These farmer groups were also able to access better technologies and also have acted as financial security and house hold investments to access credit where group members act as collateral for each other so as to get credit funds.

5.1.2 The nature of products and services provided by Operation Wealth Creation in reducing poverty in Bukiende Sub county Mbale District.

Despite the fact that the funds were insufficient to enable effective operation wealth Creation implementation, Operation Wealth Creation provided services like Improving literacy amongst farmers which involved empowering farmers with technical skills. Equipping farmers with knowledge about commercial farming, modern farming methods for example irrigation, stemming, etc and also encouraged farmers to create their own jobs through commercial farming.

Alongside promoting literacy amongst farmers, Operation Wealth Creation also provided farm inputs to farmers for example fertilizers, and also provided farmers with seedlings like mangoes seedlings, maize, beans, coffee, cassava tubers, etc for planting.

5.1.4 The challenges faced by Operation Wealth Creation in implementing its activities in Mbale district, Bukiende Sub county as a case study and possible solutions to the above challenges are as discussed below.

The summary of challenges included delivery of low quality inputs, late delivery of inputs, high mortality rate of planting material, delivery of inputs to wrong agro ecological zones, Poor harvest handling and processing, inflation of prices of the products, forging signatures of OWC officials , falsification of documents at different levels, the existence of weak farmer groups, climate change and lack of water for Agricultural production and irrigation,, existence of conmen who ask for money claiming to be part of the Operation Wealth Creation team, among others as discussed in Chapter four above.

However in abide to solve the above challenges; the following strategies were put in place.

Continued deployment of officers in areas with gaps, Formation of farmer groups, water production ie areas that need immediate water attention were to be identified by OWC team and work hand in hand with the ministry of water and environment to solve the issue of scarcity of water for irrigation, Implementation of regional logistics, hub and e-voucher system to serve as one stop centres for all logistics supported by OWC and all farmers were required to get their farm inputs directly from these hubs, and finally the need for OWC to adopt new administrative structure that is responsive to the needs and tasks of phase two of the Operation. (Ugandradionetwork.net).

5.2 Conclusions.

In conclusion, poverty is one of the greatest challenges that keep Ugandans backward because Operation Wealth Creation as a program aimed at eradicating poverty in partnership with the government of Uganda. This left a positive impact on the farmers who fully utilized the resources provided by Operation Wealth Creation for example the farmer mentioned in Chapter four above Mr. welishe Joseph despite the fact that not all farmers benefited, some of them registered good yields from Operation Wealth Creation.

5.3 Recommendations.

Operation Wealth Creation Coordinator Genery Caleb Akandwanaho (Salim Saleh) recommended that the program (OWC) must undergo urgent transformation in order to sustain its objective and forcus (ugandaradionetwork.com)

The government should strengthen its economic empowerment programs through carrying out effective planning and follow up at all implementation stages in order to achieve Intended goals and objectives effectively and efficiently which in turn will help to minimize poverty among Ugandans. In this case if farmers are able to get self-employed through the initiatives of Operation Wealth Creation, they will be able to support their family's needs.

REFERENCES

Chambers R. (1995) poverty and Livelihoods, whose reality counts? Environment and Urbanization 7,173-204

Lv,F.(2020).Poverty Reduction and Governance after 2020: Establishing a long term mechanism to solve the problem of poverty. Expanding horizons 2,33-39

Zhang,Q(2012).Relative poverty population ratio. Statistics and decision,6,87-88

www.investopedia.com

World Bank poverty statistics

MAAIF 2021(Ministry of Agriculture, Animal Industry and Fisheries

APPENDICES

APPENDIX I: QUESTIONNAIRE

Hello, my name is Wandawa Christine, a student of Uganda Christian University Main

Campus pursuing Bachelors of Social work and social administration. I am carrying out an evaluation research on “The impact of Operation Wealth Creation on Poverty reduction in Bukiende in Mbale district, a case study of Bukiende Sub County”

I grantee you that the information you are going to give me is going to be confidential and it will only be used for academic purposes. The questionnaire will take about 15 minutes. I am interviewing the beneficiaries of Operation Wealth Creation on how effectively they have benefited from the program of Operation Wealth Creation under the government of Uganda.

The information collected will help the Government, non-government organizations, Local leaders, to dissolve the issues in this report in to their plans for the betterment of families that have been affected by poverty.

Your participation and honest contribution will be of high importance.

Are you willing to participate?

YES

NO

Questionnaire Instruction.

Circle the most correct answer

1. What is the gender of the household head?

Male

Females

2. What is your marital status?

Single

Married

Widowed

Cohabiting

3. Have you benefited from Operation Wealth Creation Program?

Yes

No

4. What has Operation Wealth Creation contributed to you and your family well-being?

Basic needs issues

Self-employment

Improved commercial farming

Educating your children

Social support

5. Have you accessed the products and services provided by Operation Wealth Creation?

Yes

No

6. If yes, what did you benefit from those products and services?

Agri-business skills

Modern farming skills

None

7. What is your occupational status?

Employed

Unemployed

8. Which of these describes the monthly income you earn?

Less than 14 dollars

More than 14 dollars but less than 20

Less than 30 dollars

More than 30 dollars

Do not earn money

9. How many people live at this home?

Less than 4 people

Exactly 4 people

More than 4 people

10. How many children do you have?

One child

Two children

Three children

APPENDIX II:
INTERVIEW GUIDE OF KEY INFORMANT

Introduction

Good morning/afternoon. My name is Wandawa Christine, a student of Uganda Christian University Main Campus pursuing a Bachelor of Social work and Social Administration under the faculty of the school of Social Sciences.

I am conducting an evaluation research on the effect of operation wealth Creation on poverty reduction in Mbale district a case study of Bukiende Sub County. You have been selected as a key respondent in this study. However, your participation is voluntary and the information you give will be kept with great confidentiality

What do you understand by the term poverty?

.....
.....
.....
.....
.....

What do you think Operation Wealth Creation has contributed towards the reduction of poverty in Bukiende Sub County?

.....
.....
.....
.....
.....
.....

What are the products and services that were offered by Operation Wealth Creation in abide to reduce poverty in Bukiende Sub County?

.....
.....

What are the challenges that were faced during the Implementation of operation wealth Creation Program?

.....
.....
.....
.....

What strategies were put in place to overcome the above challenges that were faced during the implementation of ;

.....
.....
.....
.....

University Introductory letter for research



**UGANDA CHRISTIAN
UNIVERSITY**

A Centre of Excellence in the Heart of Africa

December 11th 2023

TO WHOM IT MAY CONCERN

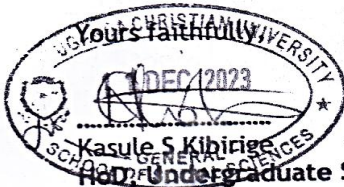
Dear Sir/Madam

Re: INTRODUCTORY LETTER FOR RESEARCH

This is to introduce to you **WANDAWA Christine** Registration number **S15B15/912**, a student of Uganda Christian University, pursuing Bachelor's degree in Social Work. She is expected to carry out research in the final year under the guidance of a university supervisor in partial fulfillment for the requirements of the above mentioned award.

Topic: "The Impact of Operation Wealth Creation on Poverty Reduction in Mbale District: A Case Study of Bukienye Sub County."

The purpose of this communication is to request your office to allow her collect data from your organization. Any assistance rendered to her will be highly appreciated.



Kasule S Kibirige
HOD, Undergraduate Studies Department

Tel: 0776711546

Email:kkibirige@ucu.ac.ug

A Centre of Excellence in the Heart of Africa

P.O. Box 4, Mukono, Uganda (East Africa), Plot 67-173, Bishop Tucker Road, Mukono Hill, Tel: +256 (0) 31 235 0800, www.ucu.ac.ug
Ugandachristianuniversity @UCUniversity, Founded by the Province of Church of Uganda, Chartered by the Government of Uganda.

Agency acceptance letter for research

MBALE DISTRICT LOCAL GOVERNMENT

Tel: General Line: 045 433401/4
Direct Line: 045 4 33458
Fax: 045 4 33987
Mobile:
Email: caombale@gmail.com



**CHIEF ADMINISTRATIVE OFFICER'S
OFFICE
P.O. BOX 931
MBALE**

THE REPUBLIC OF UGANDA

*IN ANY CORRESPONDENCE ON
THIS SUBJECT PLEASE QUOTE NO: CR/164/2*

December 20, 2023

Wandawa Christine

Thru: The HOD, under graduate Studies Department,
UCU, Mukono



ADMISSION FOR INTERNSHIP

This is to inform you that you have been offered an opportunity to undertake internship training in Mbale District Local Government for a period of one month in **January, 2024**.

The internee is pursuing a **Bachelor of Social Work and Social Administration**.

During the period of internship, you will be attached to the Bukende Sub -County under the supervision of **Senior Assistant Chief Administrative Officer**.

**Mafabi Robert Waburoko
FOR: CHIEF ADMINISTRATIVE OFFICER**

